



A TEREX BRAND

# *Parts Manual*

Serial Number Range

***Superlift  
Advantage***

from SLA04-25259

Part No. 115408  
Rev B3  
December 2010

## Technical Publications

Genie Industries has endeavored to deliver the highest degree of accuracy possible. However, continuous improvement of our products is a Genie policy. Therefore, product specifications are subject to change without notice.

Readers are encouraged to notify Genie of errors and send in suggestions for improvement. All communications will be carefully considered for future printings of this and all other manuals.

## Contact Us:

<http://www.genieindustries.com>  
e-mail: [awp.techpub@terex.com](mailto:awp.techpub@terex.com)

## Serial Number Information

Genie Industries offers the following Parts Manuals for these models.


Title	Part No.
Genie Superlift Advantage Parts and Service Manual, First Edition, First Printing (to serial number SL04-25258).....	32283
Genie Superlift Advantage Parts and Service Manual, Second Edition, Third Printing (from serial number SL04-25259).....	*80170

\*Note: Genie Superlift Advantage Service Manual 115407 and Genie Superlift Advantage Part's Manual 115408, replaces Genie Superlift Advantage Parts and Service Manual 80170.

Copyright © 1994 by Genie Industries

115408 Rev B July 2009  
Third Edition, Second Printing

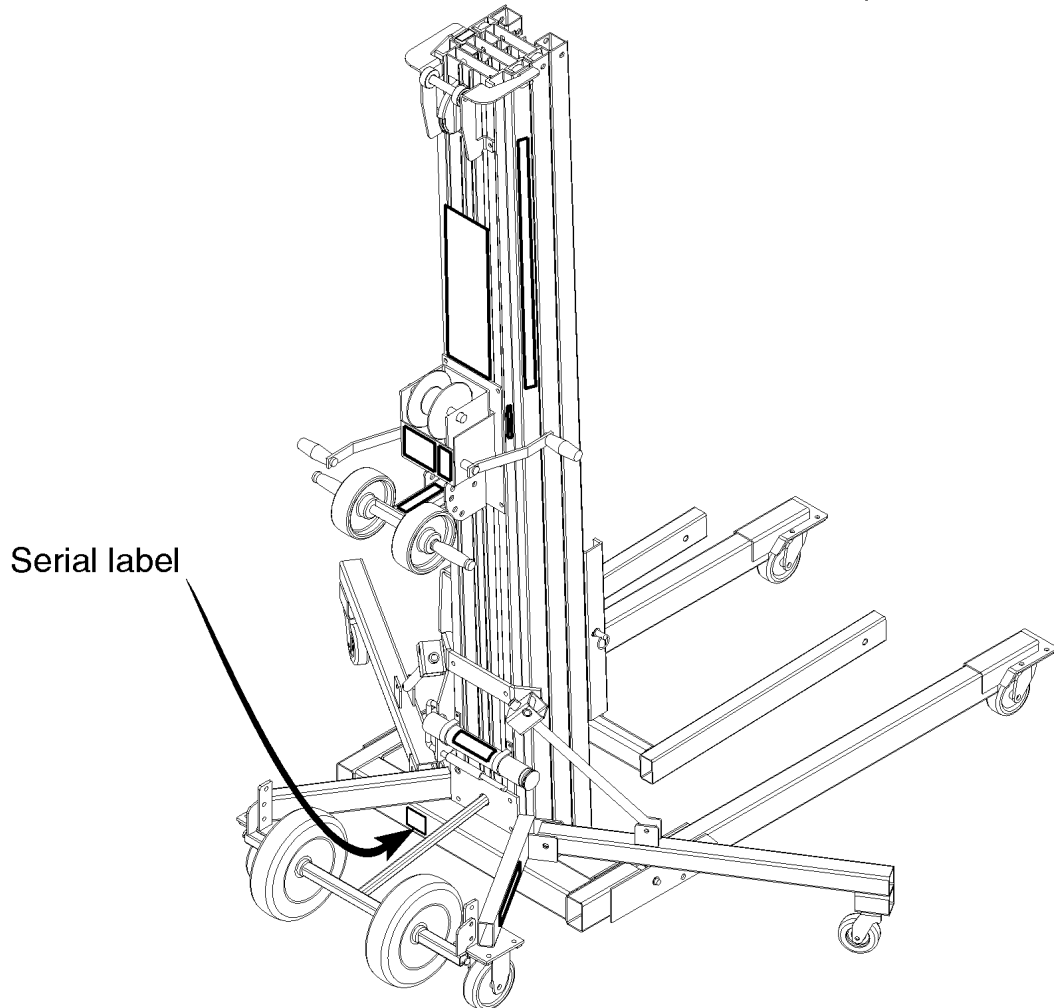
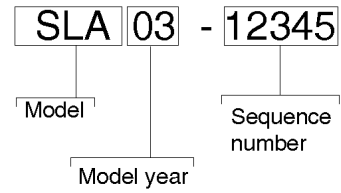
"Genie" and "SLA" are registered trademarks of Genie Industries in the USA and many other countries.

 Printed on recycled paper

**Genie**  
A TEREX COMPANY  
Genie Industries  
18340 NE 76th Street  
Redmond, WA 98052 USA

Model Name: SLA-5  
Serial Number: SLA03-12345  
Manufacture Date: 01/02/03  
Electrical Schematic: N/A

**CE**  
YR



## Table of Contents

This manual is updated frequently. If you have a printed manual, you can keep it up to date by downloading new figures from the Genie website at [www.genieindustries.com](http://www.genieindustries.com). For the most up-to-date parts information, visit the Parts Lookup System on the Genie website at [www.genieindustries.com](http://www.genieindustries.com).

How to Read Your Serial Number.....	3
Parts Stocking List.....	7
How to Order Parts.....	8
Service Parts Fax Order Form.....	9

### **Electronic Version**

Click on any page number to view the figure.

#### **100 Decals**

101.1 Decals with Words.....	10
102.1 Decals with Symbols.....	12

#### **200 Base Components**

201.1 Base Components - Standard.....	14
202.1 Base Components - Straddle (SLA-5, SLA-10 and SLA-15).....	16
203.1 Base Components.....	18

#### **300 Mast and Winch Components**

301.1 Mast Components, View 1.....	20
302.1 Mast Components, View 2.....	22
303.1 Mast Components, View 3.....	24
304.1 Columns, Pulleys and Cables.....	28
305.1 Winch Components, One-speed.....	32
306.1 Winch Components, Two-speed.....	34

#### **400 Accessories**

401.1 Forks.....	36
402.1 Pipe Cradle, Load Platform and Boom Arm.....	38
403.1 Rear Wheels.....	40

#### **Indices**

Part Number Index.....	42
Part Description Index.....	43

#### **Cross References**

Fittings Cross Reference.....	46
-------------------------------	----

***This Page Intentionally Left Blank***



## Required Parts

The following parts are required to perform maintenance procedures as outlined in the *Genie Superlift Advantage Service Manual*.

Description	Part No.
White Lithium Grease .....	91670
Cable Replacement Coupler .....	12402
Disc Brake (One-Speed Winch).....	7571
Disc Brake (Two-Speed Winch).....	37061

## Recommended Parts

Description	Part No.
Genie Blue Paint, 1 Gallon (3.78 liters) .....	32150
Genie Blue Paint, 12 Ounce Aerosol (355 ml).....	1484
Genie Gray Paint, 1 Gallon (3.78 liters).....	32151
Genie Gray Paint, 12 Ounce Aerosol (355 ml) .....	1268
Pinion Plate (One-Speed Winch).....	7591
Pinion Plate (Two-Speed Winch) .....	40122
Ratchet Gear (One-Speed Winch).....	6777
Ratchet Gear (Two-Speed Winch) .....	40121
Pinion Gear (One-Speed Winch) .....	7590
Pinion Gear (Two-Speed Winch) .....	80157
Pinion Shaft (One-Speed Winch).....	32891
Ratchet Pawl Kit (One-Speed Winch).....	40458
Ratchet Pawl Kit (Two-Speed Winch) .....	40117
Cable Keeper Kit (One-Speed Winch).....	6190
Primary Shaft Assembly .....	72264
Cable Assembly (SLA-5 models).....	6443
Cable Assembly (SLA-10 models).....	6444
Cable Assembly (SLA-15 models).....	32903
Cable Assembly (SLA-20 models).....	32904
Cable Assembly (SLA-25 models).....	32905
Pin Assembly with Lanyard.....	32940
Roller Bolt, 1/2-13 x 1.84 inches.....	32475
Nylatron Roller, 1.75 x 0.72 inch.....	32473
Safety Brake Assembly.....	35101
Safety Brake Tool Assembly .....	33875
Loctite Thread Lock .....	65764
Genie Superlift Cabling Procedure Video.....	52701

## Manuals

Genie Industries offers the following support documents for these models:

Title	Part No.
Genie Superlift Advantage Operator's Manual (from serial number 5594-101 to 5501-15094 and from SLA02-15095 to SLA05-28239) .....	33499
Genie Superlift Advantage Operator's Manual (from serial number SLA05-28240) .....	97550
Genie Superlift Advantage Service Manual (from serial number SLA04-25259) .....	115407
EMI Safety Manual .....	27581
Manual of Responsibilities ANSI A92.5 .....	31587

## How To Order Parts

Please be prepared with the following information when ordering replacement parts for your Genie product:

- Machine model number
- Machine serial number
- Genie part number
- Part description and quantity
- Purchase order number
- "Ship to" address
- Desired method of shipment
- Name and telephone number of the authorized Genie Distributor in your area

Use the Service Parts Fax Order Form on the next page and fax your order to our Parts Department.

If you don't know the name of your authorized distributor, or if your area is not currently serviced by an authorized distributor, please call Genie Industries.

### Machine Information

---

Model

---

Serial Number

---

Date of Purchase

---

Authorized Genie Distributor

---

Phone Number

#### Genie North America

Telephone (425) 556-6551

Toll Free (877) 367-5606 in U.S.A. and Canada

Fax (425) 556-8659

#### Genie UK

Parts Telephone (44) (0) 1476 584352

Parts Fax (44) (0) 1476 584340

#### Genie Australia

Parts Telephone (617) 03375 1660

Parts Fax (617) 03375 1002

#### Genie France

Parts Telephone (33) (0) 237 26 09 99

Parts Fax (33) (0) 237 31 50 10

#### Genie Germany

Parts Telephone (49) (0) 4202 885223

Parts Fax (49) (0) 4202 885225

#### Genie Scandinavia

Parts Telephone (46) (31) 3409612

Parts Fax (46) (31) 3409613

#### Genie Iberica

Parts Telephone (34) (93) 5795042

#### Genie Brazil

Parts Telephone (55) (114) 1665755

Parts Fax (55) (114) 1665754

#### Genie Japan

Parts Telephone (81) (33) 4536082

Parts Fax (81) (33) 4536083

#### Genie China

Parts Telephone (86) (215) 3852570

Parts Fax (86) (215) 3852569





**Service Parts Fax Order Form**

Fax to: (425) 556-8659 or Toll Free: 888-274-6192  
 International: +1-425-556-8659

**Please fill out completely**

Date \_\_\_\_\_ Account Number \_\_\_\_\_  
 Your Name \_\_\_\_\_ Your Fax Number \_\_\_\_\_  
 \_\_\_\_\_ Your Phone Number \_\_\_\_\_  
 Bill To \_\_\_\_\_ Ship To \_\_\_\_\_  
 \_\_\_\_\_  
 \_\_\_\_\_  
 Purchase Order Number \_\_\_\_\_ Ship Via \_\_\_\_\_

Model(s) \_\_\_\_\_ Serial No.(s) \_\_\_\_\_

Optional Equipment \_\_\_\_\_

Part Number	Description	Quantity	Price

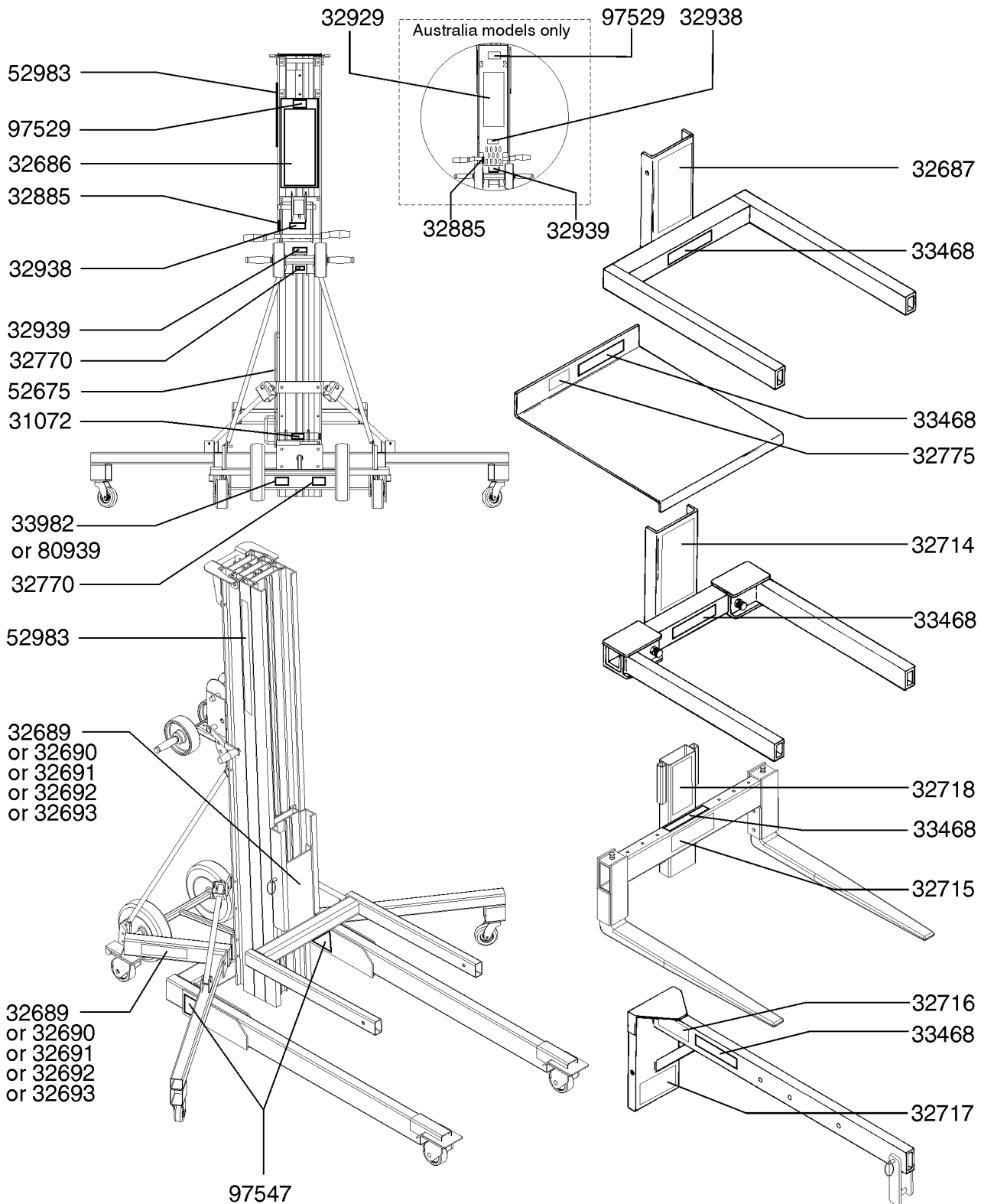
All back-ordered parts will be shipped when available via the same ship method as the original order unless noted below:

- Ship complete order only - No back orders
- Ship all available parts and contact customer on disposition of back-ordered parts
- Other (please specify)

**FOR GENIE INDUSTRIES USE ONLY**

Order Number \_\_\_\_\_ Origin Code \_\_\_\_\_ Comments \_\_\_\_\_  
 Date Scheduled \_\_\_\_\_ Ship Condition \_\_\_\_\_  
 Order Total \_\_\_\_\_ Terms Code \_\_\_\_\_

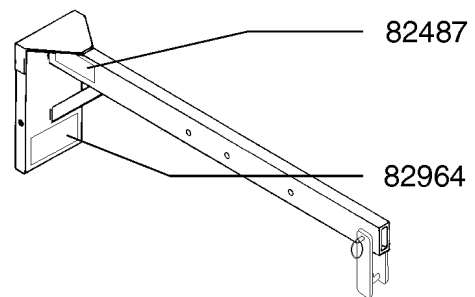
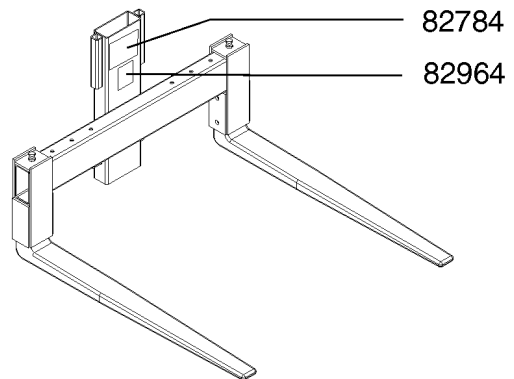
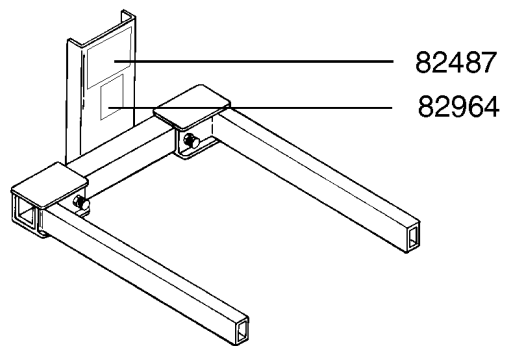
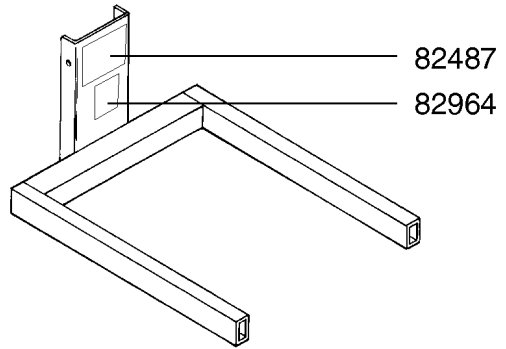
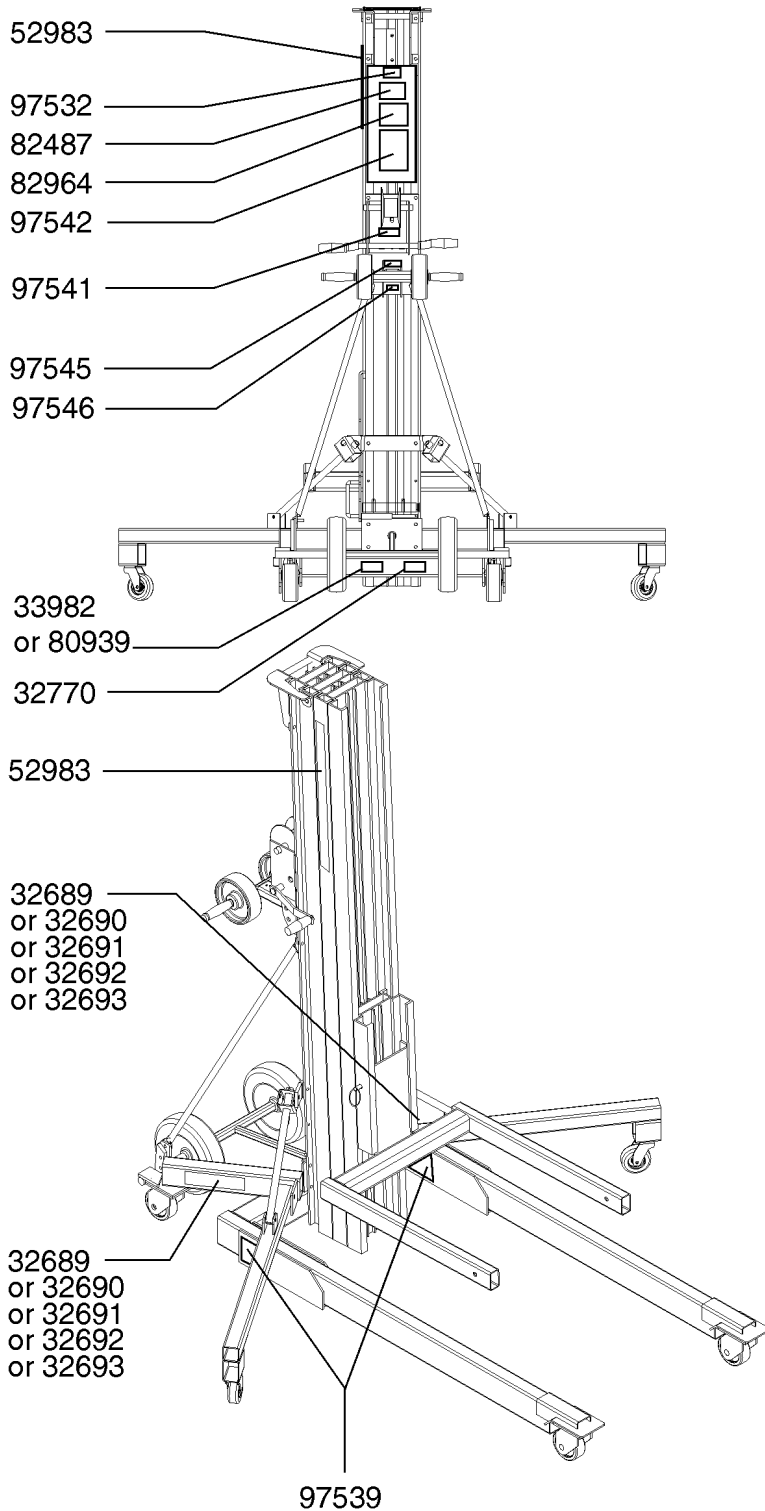
101.1 Decals with Words



## 101.1 Decals with Words

Item	Part No.	Description	Qty.
1	31072	DECAL,LABEL,OPER.MAN.STORAGE.1	
2	32686	DECAL,OPERATING INSTRUCT. SLA.....1	1
3	32687	DECAL,WARNING STD.FORK SAFETY.....1	1
4	32689	DECAL,MODEL HEIGHT SL5.....2	
4A	32690	DECAL,MODEL HEIGHT SL10	
4B	32691	DECAL,MODEL HEIGHT SL15	
4C	32692	DECAL,MODEL HEIGHT SL20	
4D	32693	DECAL,MODEL HEIGHT SL25	
5	32714	DECAL,WARNING ADJ. FORK SETUP.....1	1
6	32715	DECAL,NOTICE FLAT FORK SETUP.....1	1
7	32716	DECAL,NOTICE BOOM SETUP.....1	1
8	32717	DECAL,WARNING BOOM SAFETY.....1	1
9	32718	DECAL,WARNING FLAT FORK SAFETY.....1	1
10	32770	DECAL,2 SPD.WINCH**.....1	1
11	32775	DECAL,WARNING,FALL HAZARD.....1	1
12	32885	DECAL,SILENT WINCH.....1	1
13	32938	DECAL,LABEL,WINCH ONLY.....1	1
14	32939	DECAL,CRUSHING HAZ/BRAKE LOCK.....1	1
15	33468	DECAL,WARNING,NO RIDERS.....5	5
16	52675	DECAL,CAUTION,DAMAGD MACHINE.....1	1
17	52983	DECAL,GENIE SUPERLIFT ADVANTAG.....2	2
18	97547	DECAL,DANGER,ELEC.HAZ.....2	2
19	97529	DECAL,CAUTION,MOVING PARTS.....1	1
20	80939	SERIAL # LABEL,MAT LIFT & SS**.....1	1

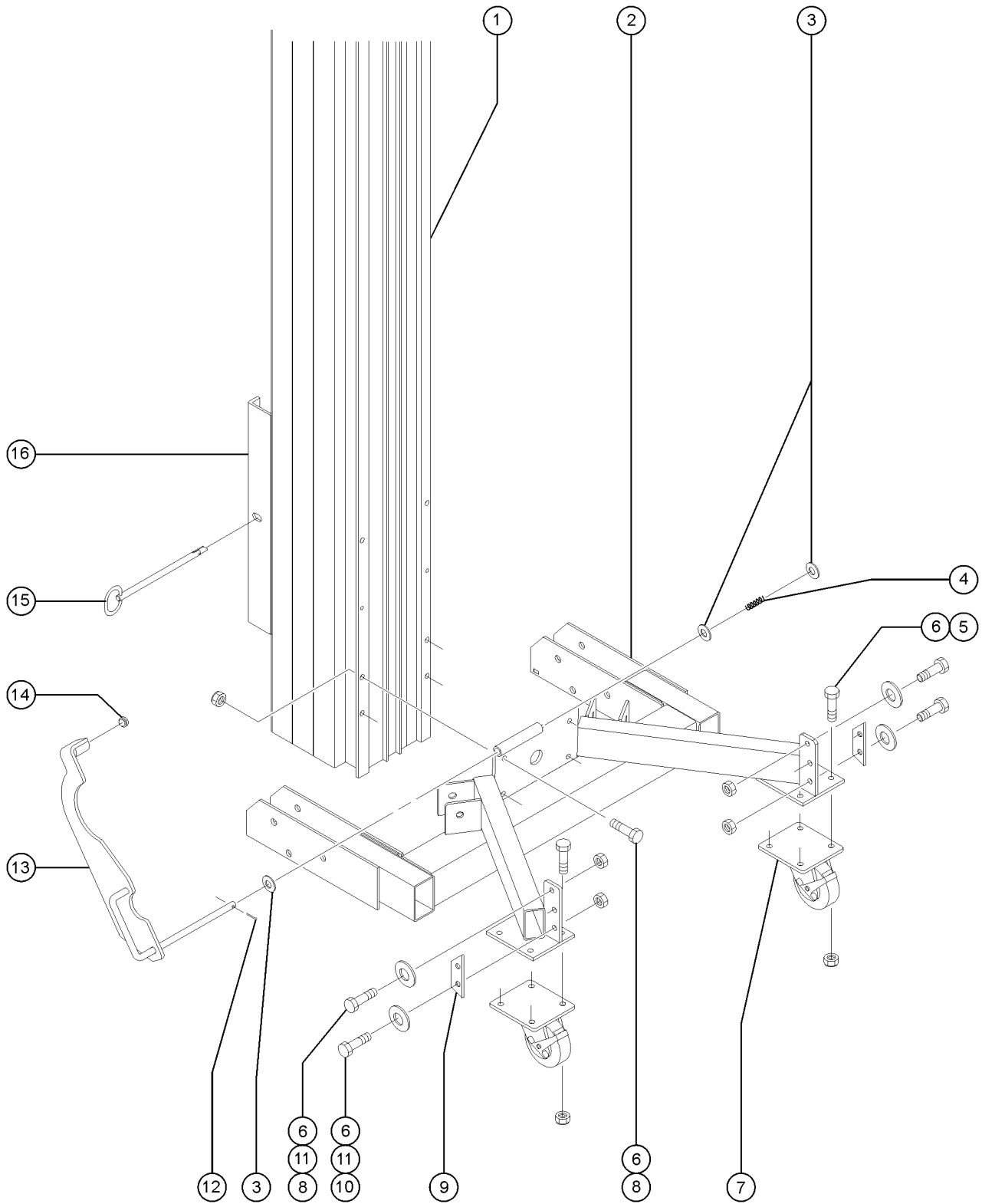
102.1 Decals with Symbols



## 102.1 Decals with Symbols

Item	Part No.	Description	Qty.
--	32689	DECAL,MODEL HEIGHT SL5.....	2
--	32690	DECAL,MODEL HEIGHT SL10	
--	32691	DECAL,MODEL HEIGHT SL15	
--	32692	DECAL,MODEL HEIGHT SL20	
--	32693	DECAL,MODEL HEIGHT SL25	
2	52983	DECAL,GENIE SUPERLIFT ADVANTAG.....	2
3	82487	DECAL,SYMBOL-READ THE MANUAL.....	2
4	82964	DECAL,WARNING,NO RIDERS SYMB.....	1
5	97532	DECAL,CAUTION,MOVING PARTS SYM.....	1
6	97539	DECAL,DANGER,ELEC.HAZ.....	2
7	97541	DECAL,LABEL,WINCH ONLY SYMB.....	1
8	97542	DECAL,WARNING,LOAD CHART SLA.....	1
9	97545	DECAL,WARNING,BRAKE LOCK SYMB.....	1
10	97546	DECAL,2 SPD.WINCH SYMB.....	1
11	80939	SERIAL # LABEL,MAT LIFT & SS**.....	1

201.1 Base Components - Standard



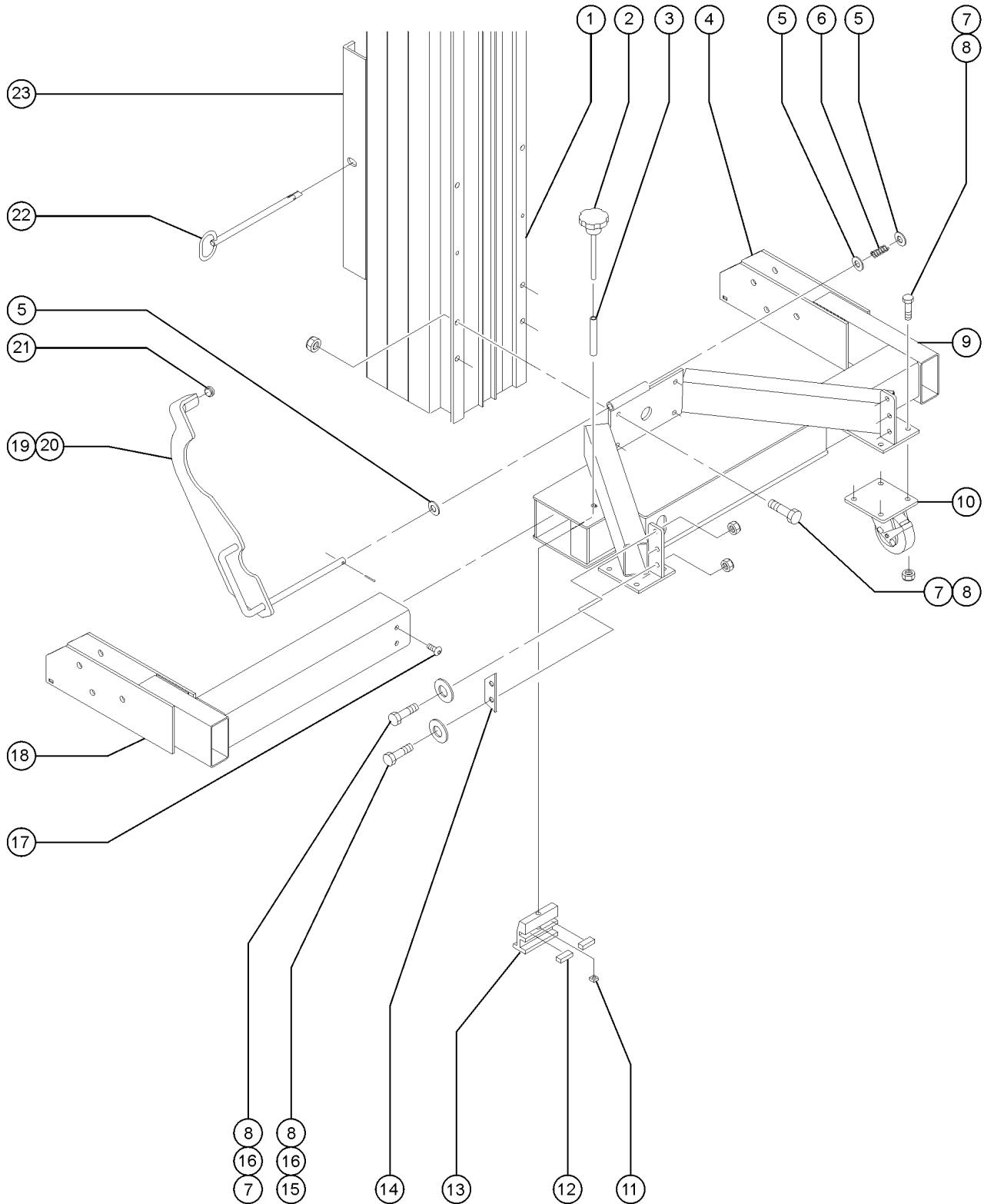
A TEREX BRAND

201.1 Base Components - Standard

Item	Part No.	Description	Qty.	Item	Part No.	Description	Qty.
1		Ref. Columns <i>(refer to 304.1)</i>		13	107153	HLD DOWN KIT,SHORT SLA-5, SLA-10, SLA-15 (Asia, S. America and Europe) (includes items 12 and 14)	
2	107171	BASE ASSY W/ WRD DECALS (SLA5) <i>USA, Canadian and Australian models</i>		13A	107154	HLD DOWN KIT, LONG SLA-20, SLA-25 (Asia, S. America and Europe) (includes items 12 and 14)	
2A	107181	BASE ASSY W/ SYM DECALS (SLA5) <i>Asia, S. America and European models</i>		14	11890	GLIDE BUTTON,SIDE,GLL,.100 TK.....1	
2B	107172	BASE ASSY W/ WRD DECALS(SLA10) <i>USA, Canadian and Australian models</i>		15	48301	PIN,TOGGLE,.50 X 8.13***.....1	
2C	107182	BASE ASSY W/ SYM DECALS(SLA10) <i>Asia, S. America and European models</i>		16		Ref. Carriage <i>(refer to 304.1)</i>	
2D	107173	BASE ASSY W/ WRD DECALS(SLA15) <i>USA, Canadian and Australian models</i>					
2E	107183	BASE ASSY W/ SYM DECALS(SLA15) <i>Asia, S. America and European models</i>					
2F	107174	BASE ASSY W/ WRD DECALS(SLA20) <i>USA, Canadian Australian models; Australian models</i>					
2G	107184	BASE ASSY W/ SYM DECALS(SLA20) <i>Asia, S. America and European models</i>					
2H	107175	BASE ASSY W/ WRD DECALS(SLA25) <i>USA, Canadian and Australian models</i>					
2I	107185	BASE ASSY W/ SYM DECALS(SLA25) <i>Asia, S. America and European models</i>					
3	21443	SHIM,.75 X.45 X.064.....3					
4	33658	SPRING,HOLDOWN SL2E.....1					
5	6175	SCREW,HHC,3/8-16 X 1					
6	4828	NUT,NYLOCK,3/8-16					
7	57740	CASTER,PL,SW LOCK, SB, 5 X 2...2					
8	6019	SCREW,HHC,3/8-16 X 1.25 GRD 5					
9	33670	SKID PAD.....2					
10	8516	SCREW,HHC,3/8-16 X 1.50					
11	6097	WASHER,FLAT,USS,3/8",Y					
12	12016	PIN,COTTER,.125 X .75.....1					



202.1 Base Components - Straddle (SLA-5, SLA-10 and SLA-15)

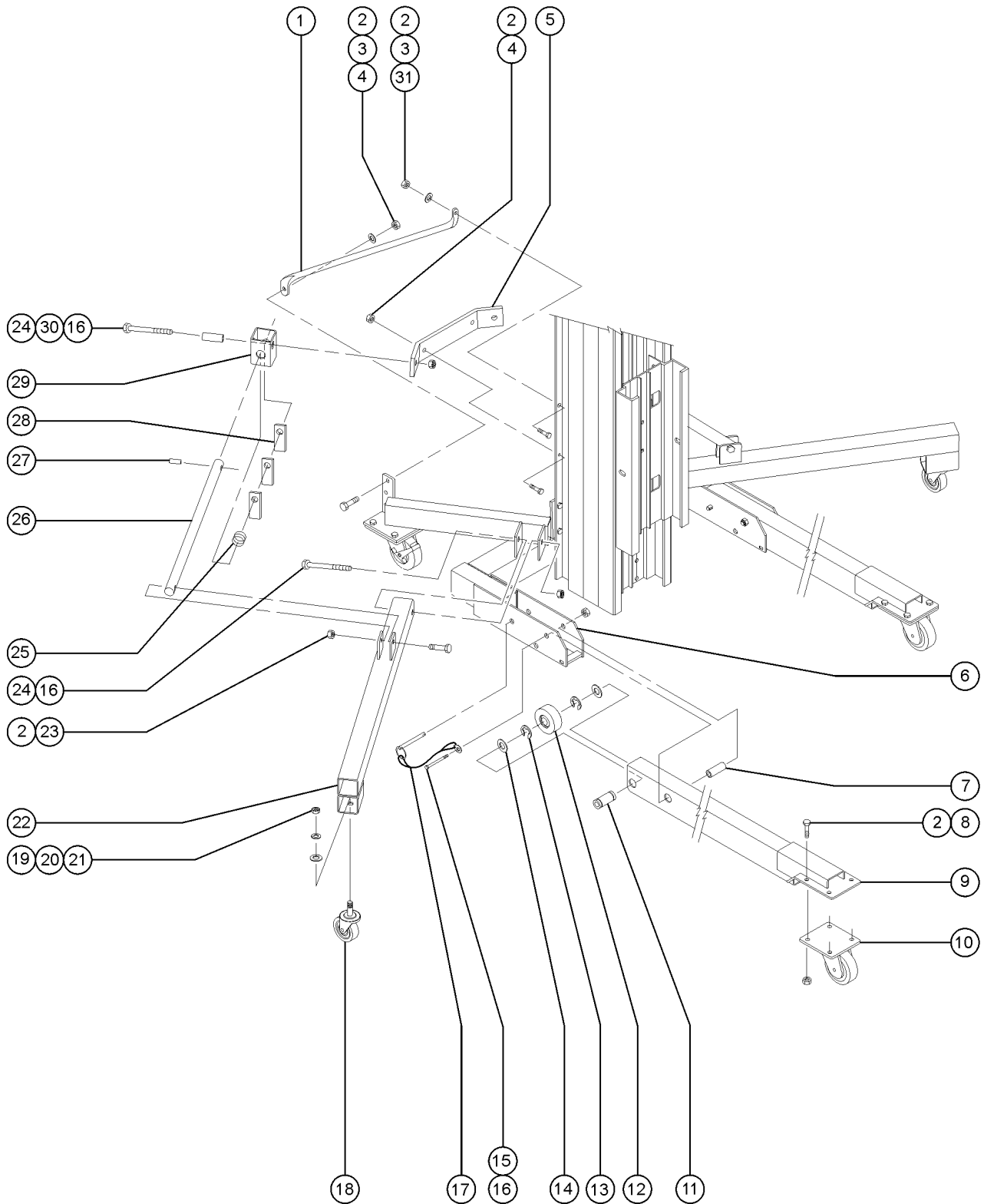




## 202.1 Base Components - Straddle (SLA-5, SLA-10 and SLA-15)

Item	Part No.	Description	Qty.
1		Ref. Columns (refer to 304.1)	
2	33148	KNOB,STRADDLE BASE SL2.....2	
3	33251	SPACER-STRADDLE BASE-3".....2	
4	32531	WELDMENT,ARM STRADDLE RIGHT.....1	
5	21443	SHIM,.75 X.45 X.064.....3	
6	33658	SPRING,HOLDOWN SL2E.....1	
7	6019	SCREW,HHC,3/8-16 X 1.25 GRD 5	
8	4828	NUT,NYLOCK,3/8-16	
9	80176-S	BASE ASSY/STRADDLE, SLA-5.....1	
9A	80177-S	BASE ASSY-STRADDLE, SLA-10	
9B	80178-S	BASE ASSY-STRADDLE, SLA-15	
10	57740	CASTER,PL,SW LOCK, SB, 5 X 2...2	
11	35408	NUT,SQUARE 3/8-16 NC, PLATED	
12	46683	BLOCK,RETAINING; SLA STRADLE.....4	
13	40255	WEDGE, MACHINED.....2	
14	33670	SKID PAD.....2	
15	8516	SCREW,HHC,3/8-16 X 1.50	
16	6097	WASHER,FLAT,USS,3/8",Y	
17	28487	SCREW,BHHS,3/8-16 X 1	
18	32532	WELDMENT,ARM STRADDLE LEFT.....1	
19	58750	HOLD DOWN KIT W/DECAL SL SHORT SLA-5, SLA-10, SLA-15 (USA, Canada, Australia) (includes items 12 and 14)	
19A	107153	HLD DOWN KIT,SHORT SLA-5, SLA-10, SLA-15 (Asia, S. America, Europe) includes items 12 and 14	
20	12016	PIN,COTTER,.125 X .75.....1	
21	11890	GLIDE BUTTON,SIDE,GLL,.100 TK.....1	
22	48301	PIN,TOGGLE,.50 X 8.13***.....1	
23		Ref. Carriage (refer to 304.1)	

203.1 Base Components

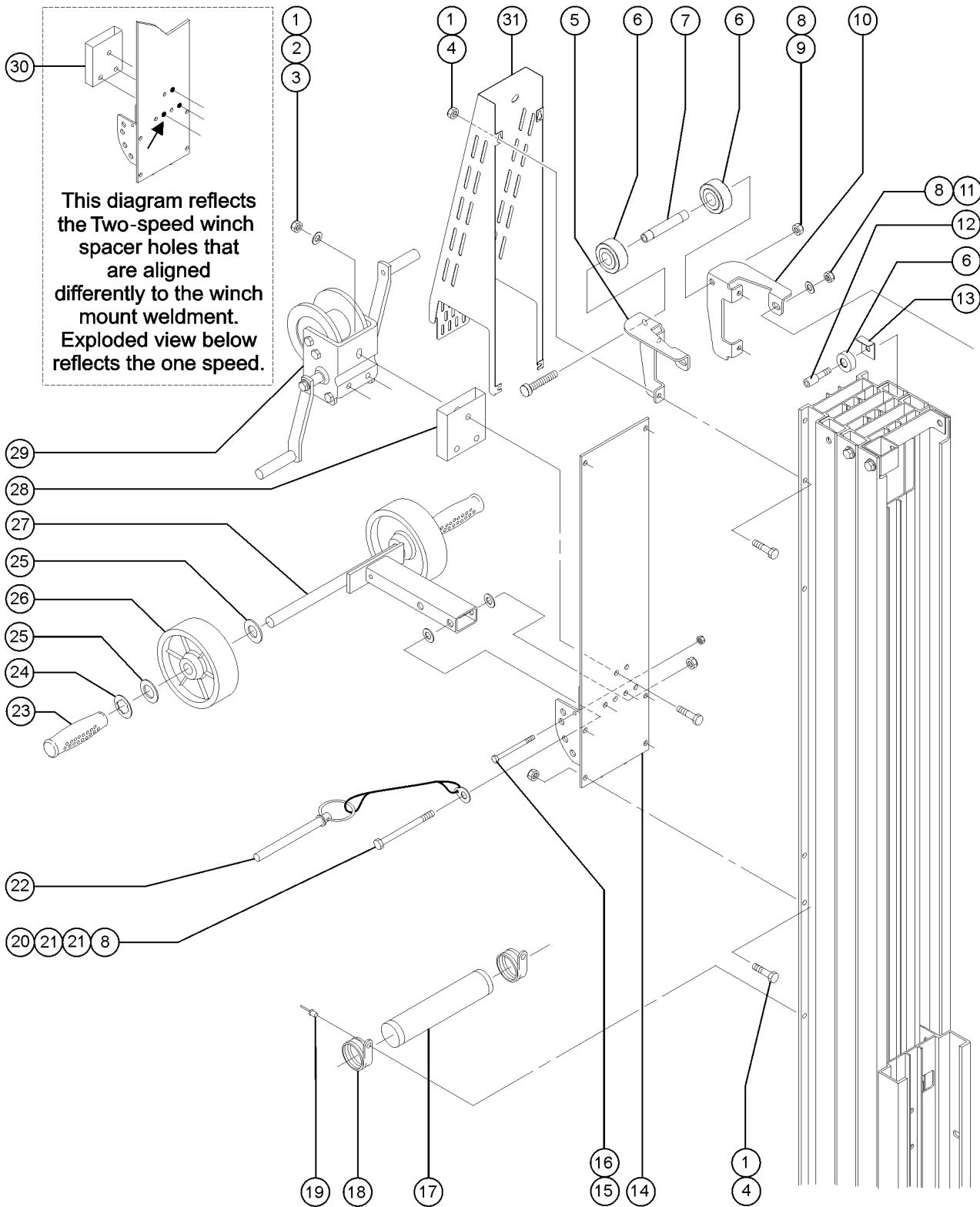


203.1 Base Components

Item	Part No.	Description	Qty.	Item	Part No.	Description	Qty.
--	37481	SLA STABILIZER SET ASSY.SERV. <i>includes items 2 - 5, 16, 18 and 22 - 30</i>		31	8516	SCREW,HHC,3/8-16 X 1.50.....	4
1	32883	STRUT,RH,SL2.....	1				
1A	32884	STRUT,LH,SL2					
2	4828	NUT,NYLOCK,3/8-16					
3	6097	WASHER,FLAT,USS,3/8",Y					
4	8516	SCREW,HHC,3/8-16 X 1.50					
5	35212	BRACKET, STAB.MOUNT,"GRAY".....	1				
6		Ref. Standard Base Assembly with Decals <i>(refer to 201.1)</i>					
7	32509	PIVOT TUBE SL2 LEG.....	2				
8	6175	SCREW,HHC,3/8-16 X 1					
9	32879	WELDMENT,LEG,SL5/10.....	2				
9A	32880	WELDMENT,LEG,SL15					
9B	32881	WELDMENT,LEG,SL20/25					
10	57736	CASTER,PL,SW, 4 X 2.....	2				
11	32524	AXLE TUBE, SL2 LEG.....	2				
12	57783	WHEEL,POLYOLEFIN,3.5X1.25,7/8.2					
13	32499	E CLIP,.875 IN.SL LEG.....	4				
14	33373	WASHER,SHIM,1.50 X .890 X .09...4					
15	10598	SCREW,HHC,1/2-13 X 3					
16	6086	NUT,LP NYLOCK,1/2-13					
17	100309	ASSY,PIN & LANYARD***.....	2				
18	57746	CASTER,POST,SW,3.5X1.25,1/2-13.2					
19	6034	NUT,HEX,JAM,1/2-13					
20	6033	WASHER,LOCK,0.5"					
21	6095	WASHER,FLAT,USS,1/2",Y					
22	32882	WELD.,STABILIZER LEG SL2 BLUE.....	2				
23	5224	SCREW,HHC,3/8-16 X 2					
24	6732	SCREW,HHC,1/2-13 X 3.25					
25	32519	SPRING,STABILIZER LATCH SL2.....	2				
26	58094	STABILIZER STRUT,ASSY..... <i>includes item 27</i>	2				
27	11337	PIN,ROLL,.25 X 1.25.....	2				
28	32577	LATCH PLATE,STABILIZER SL2.....	6				
29	32578P	CLAMP TUBE,STABILIZER BLUE...2					
30	32576	PIVOT TUBE,STABILIZER.....	2				



301.1 Mast Components, View 1

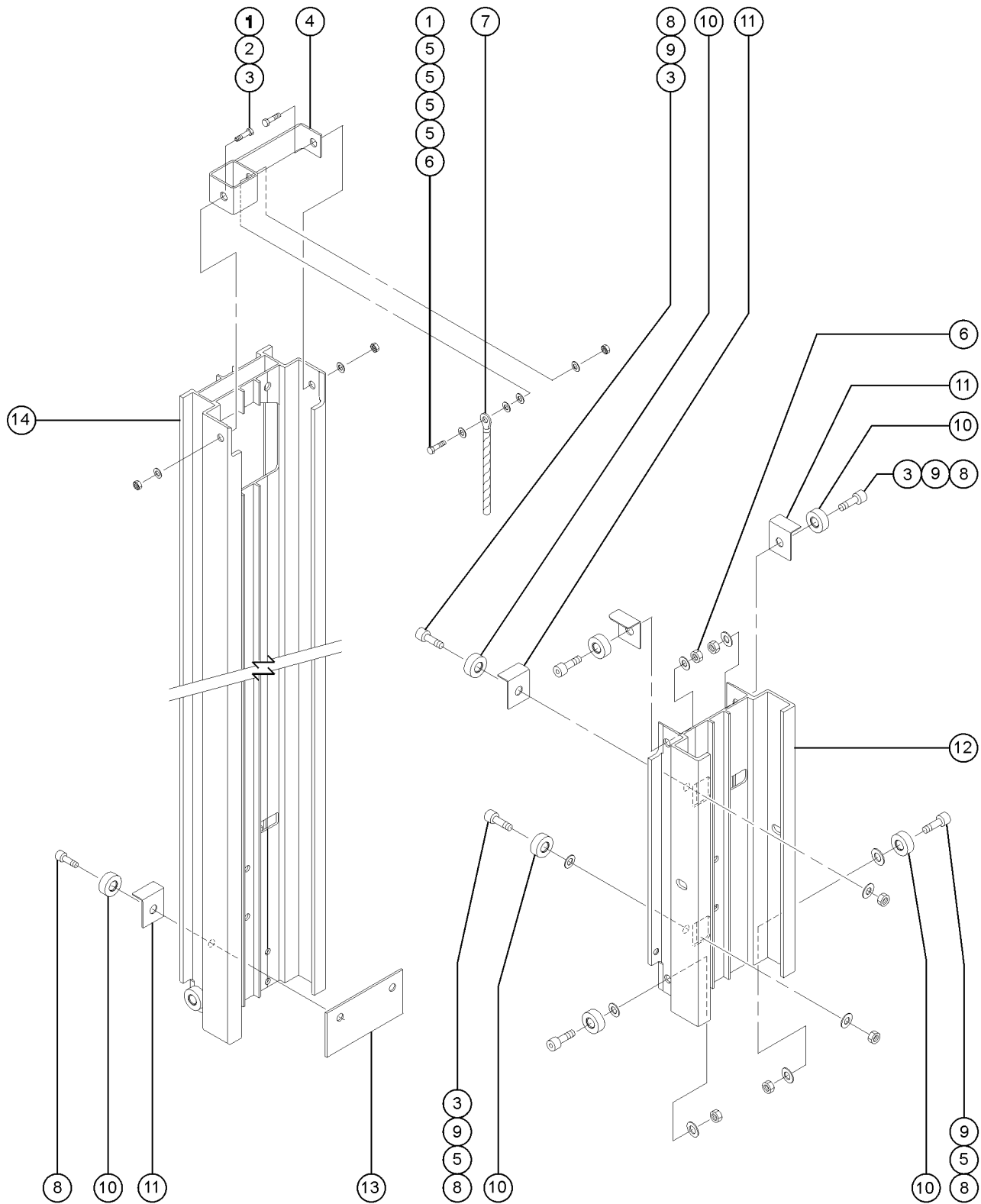


301.1 Mast Components, View 1

Item	Part No.	Description	Qty.	Item	Part No.	Description	Qty.
1	4828	NUT,NYLOCK,3/8-16		--	37202	BUSHING,6 X 2 WHEEL	
2	6097	WASHER,FLAT,USS,3/8",Y <i>(one speed winch)</i>		27	33540	LOADING WHEEL ASSY ST/SL.....1 <i>USA, Canadian and Australian models; includes items 24 - 27</i>	
2A	6097	WASHER,FLAT,USS,3/8",Y <i>(two speed winch)</i>		27A	107156	LOADING WHEEL ASSY W DECAL <i>Asia, S. America and European models; includes items 24 - 27</i>	
3	6326	SCREW,HHC,3/8-16 X 3 <i>SLA-5, SLA-10</i>		28	80435	WINCH SPACER,1 SPEED SLA, BLUE <i>SLA-5, SLA-10</i>	
3A	6175	SCREW,HHC,3/8-16 X 1 <i>SLA-15, SLA-20, SLA-25</i>		29		Ref. Winch Assembly <i>(refer to 305.1 or 306.1)</i>	
4	6019	SCREW,HHC,3/8-16 X 1.25 GRD 5		30	49991	WINCH SPACER, 2 SPEED SLC,GRAY.....1 <i>SLA-5, SLA-10</i>	
5	109577	MAST STIFFENER,RT,BLUE.....1		31	124819	KIT,CBL GRD,W/WRD DCALS,SLA.....1 <i>Australian models; assembly with word decals; from SN SLA08-43561</i>	
6	32473	WHEEL,ROLLER,NYLATRON,1.75.4					
7	33843	SPACER,MAST STIFFENER.....1					
8	6198	NUT,NYLOCK,1/2-13					
9	13005	SCREW,HHC,1/2-13 X 6,GRD.8.....1					
10	109578	MAST STIFFENER,LT,BLUE.....1					
11	6095	WASHER,FLAT,USS,1/2",Y <i>(to SN SLA05-30639)</i>					
11A	109560	WASHER, NYLON, .51X.75X.125 <i>(from SN SLA05-30640)</i>					
12	32475	BOLT-ROLLER,1/2-13X1.84 ZINC....2					
13	32474	GUARD,ROLLER, SL2,.....2					
14	80162	WINCH MOUNT W/DECAL (SLA)....1 <i>USA, Canadian and Australian models</i>					
14A	107155	WINCH MOUNT W/ SYMBOL DECAL <i>Asia, S. America and European models</i>					
15	12343	SCREW,HHC,1/4-20 X 3					
16	6091	NUT,NYLOCK,1/4-20					
17	6600-S	INSTRUCT.TUBE SERVICE KIT....1					
--	31822	CAP,INSTRUCTION TUBE (RED)					
18	6653	CLAMP,1.88,#30 X 1/4,RUB CUSH.....2					
19	7265	RIVET,STEEL,P, .25 X .375.....2					
20	6732	SCREW,HHC,1/2-13 X 3.25					
21	11978	WASHER,FLAT,NYLON.515X.88X.093					
22	100309	ASSY,PIN & LANYARD***.....1					
23	6587	HANDLE GRIP, RUBBER .75 X 4.5.....2					
24	33385	WASHER,PUSH ON .75 SHAFT....2					
25	6564	WASHER,SHIM,.765X1.312 X.093**.....4					
26	57788	WHEEL,POLY,6X2, 3/4**.....2					

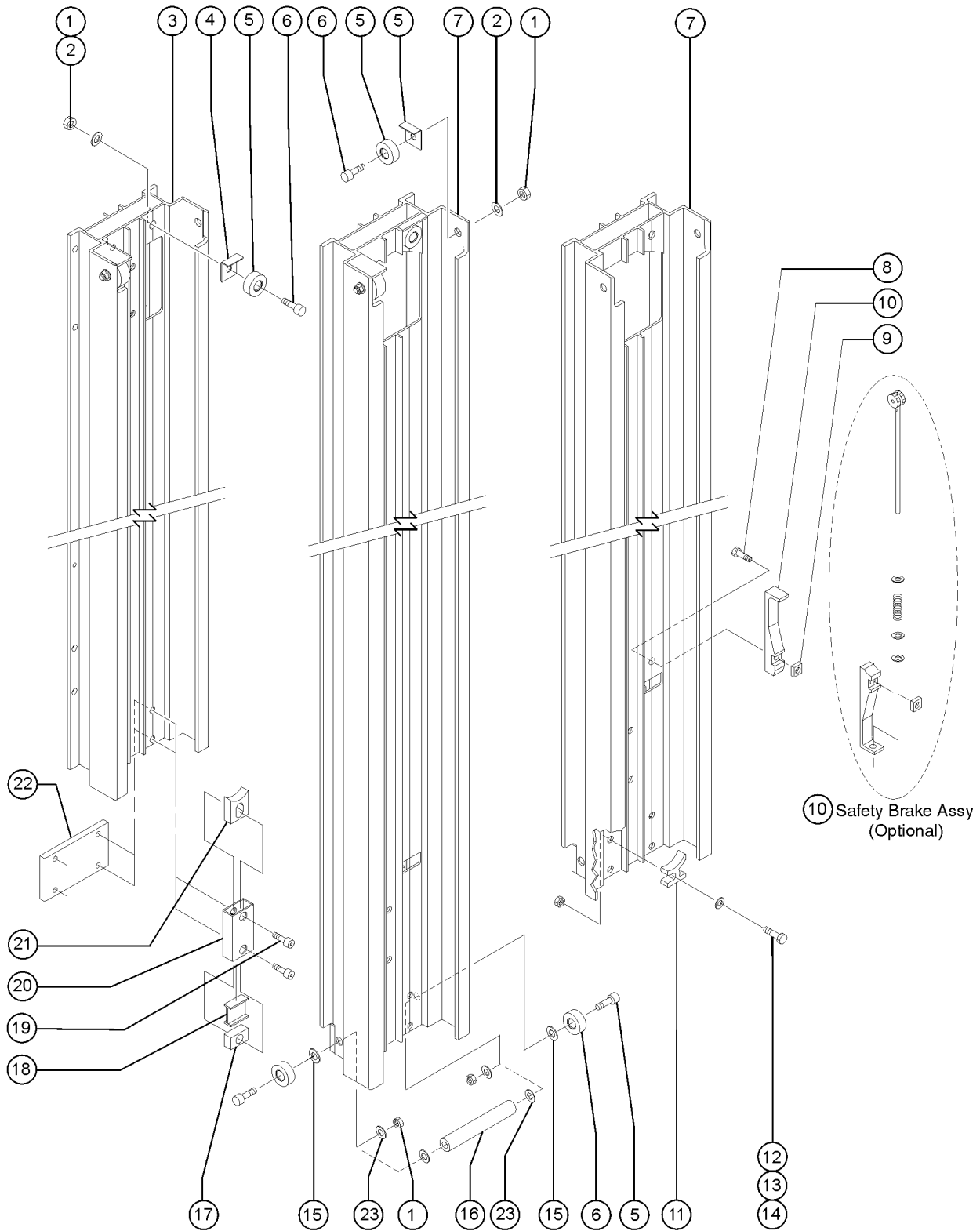


302.1 Mast Components, View 2



Item	Part No.	Description	Qty.
1	10597	SCREW,HHC,1/2-13 X 1.25 GR5	
2	6095	WASHER,FLAT,USS,1/2",Y (to SN SLA-30639)	
2A	109560	WASHER, NYLON, .51X.75X.125 (from SN SLA-30640)	
3	6198	NUT,NYLOCK,1/2-13	
4	80987	KIT, CABLE ANCHOR BRK, SLC/ST* .....1	
5	6052	WASHER,SHIM,.5 X .875 X .063.....7	
6	6086	NUT,LP NYLOCK,1/2-13	
7		Ref. Cable Assembly (refer to 304.1)	
8	32475	BOLT-ROLLER,1/2-13X1.84 ZINC....8	
9	13066	WASHER,FLAT,.5 HARDENED	
10	32473	WHEEL,ROLLER,NYLATRON,1.75.8	
11	32474	GUARD,ROLLER, SL2,.....5	
12		Ref. Carriage (refer to 304.1)	
13	57016	PLATE,DOUBLER,SL MAST.....1	
14		Ref. Number 1 Column (refer to 304.1)	

303.1 Mast Components, View 3





303.1 Mast Components, View 3

Item	Part No.	Description	Qty.	Item	Part No.	Description	Qty.
1	6198	NUT,NYLOCK,1/2-13 SLA-5, SLA-10, SLA-15, SLA-20 and SLA-25 models		8	35463	SCREW,FHS,3/8-16 X 1.5 SLA-5, SLA-10, SLA-15, SLA-20 and SLA-25 models	
2	6095	WASHER,FLAT,USS,1/2",Y SLA-5, SLA-10, SLA-15, SLA-20 and SLA-25 (to SN SLA05-30639)		9	35408	NUT,SQUARE 3/8-16 NC, PLATED SLA-5, SLA-10, SLA-15, SLA-20 and SLA-25 models	
2A	109560	WASHER, NYLON, .51X.75X.125 SLA-5, SLA-10, SLA-15, SLA-20 and SLA-25 (from SN SLA05-30640)		10	35443	UP STOP.....1 SLA-5 (for models without safety brake)	
3		Ref. Number 1 Column (refer to 304.1)		10A	35443	UP STOP.....2 SLA-10 (for models without safety brake)	
4	32474	GUARD,ROLLER, SL2,.....3 SLA-5		10B	35443	UP STOP.....3 SLA-15 (for models without safety brake)	
4A	32474	GUARD,ROLLER, SL2,.....7 SLA-10		10C	35443	UP STOP.....4 SLA-20 (for models without safety brake)	
4B	32474	GUARD,ROLLER, SL2,.....12 SLA-15		10D	35443	UP STOP.....5 SLA-25 (for models without safety brake)	
4C	32474	GUARD,ROLLER, SL2,.....17 SLA-20		10E	35101	SAFETY BRAKE ASSY(SQ.NUT)SL2**.....2 SLA-15 (if equipped) (includes items 8 and 9)	
4D	32474	GUARD,ROLLER, SL2,.....22 SLA-25		10F	35101	SAFETY BRAKE ASSY(SQ.NUT)SL2**.....3 SLA-20, SLA-25 (if equipped) (includes items 8 and 9)	
5	32473	WHEEL,ROLLER,NYLATRON,1.75.3 SLA-5		11	32522	DOWN STOP.....1	
5A	32473	WHEEL,ROLLER,NYLATRON,1.75.9 SLA-10		12	6019	SCREW,HHC,3/8-16 X 1.25 GRD 5	
5B	32473	WHEEL,ROLLER,NYLATRON,1.75.14 SLA-15		13	12013	SHIM,.375 X .063.....1	
5C	32473	WHEEL,ROLLER,NYLATRON,1.75.19 SLA-20		14	4828	NUT,NYLOCK,3/8-16	
5D	32473	WHEEL,ROLLER,NYLATRON,1.75.24 SLA-25		15	6052	WASHER,SHIM,.5 X .875 X .063 SLA-5, SLA-10, SLA-15, SLA-20 and SLA-25 models	
6	32475	BOLT-ROLLER,1/2-13X1.84 ZINC....3 SLA-5		16	33811	COUPLER BAR ASSEMBLY,SLA&C,ST2.....1	
6A	32475	BOLT-ROLLER,1/2-13X1.84 ZINC....9 SLA-10		17	57019	BLOCK,END,DOWNSTOP.....1 SLA-10	
6B	32475	BOLT-ROLLER,1/2-13X1.84 ZINC.....14 SLA-15		17A	57019	BLOCK,END,DOWNSTOP.....4 SLA-15	
6C	32475	BOLT-ROLLER,1/2-13X1.84 ZINC.....19 SLA-20		17B	57019	BLOCK,END,DOWNSTOP.....6 SLA-20	
6D	32475	BOLT-ROLLER,1/2-13X1.84 ZINC.....24 SLA-25		17C	57019	BLOCK,END,DOWNSTOP.....8 SLA-25	
7		Ref. Number 2 Column (refer to 304.1)		18	57022	BUMPER,RUBBER,DOWNSTOP....1 SLA-10	

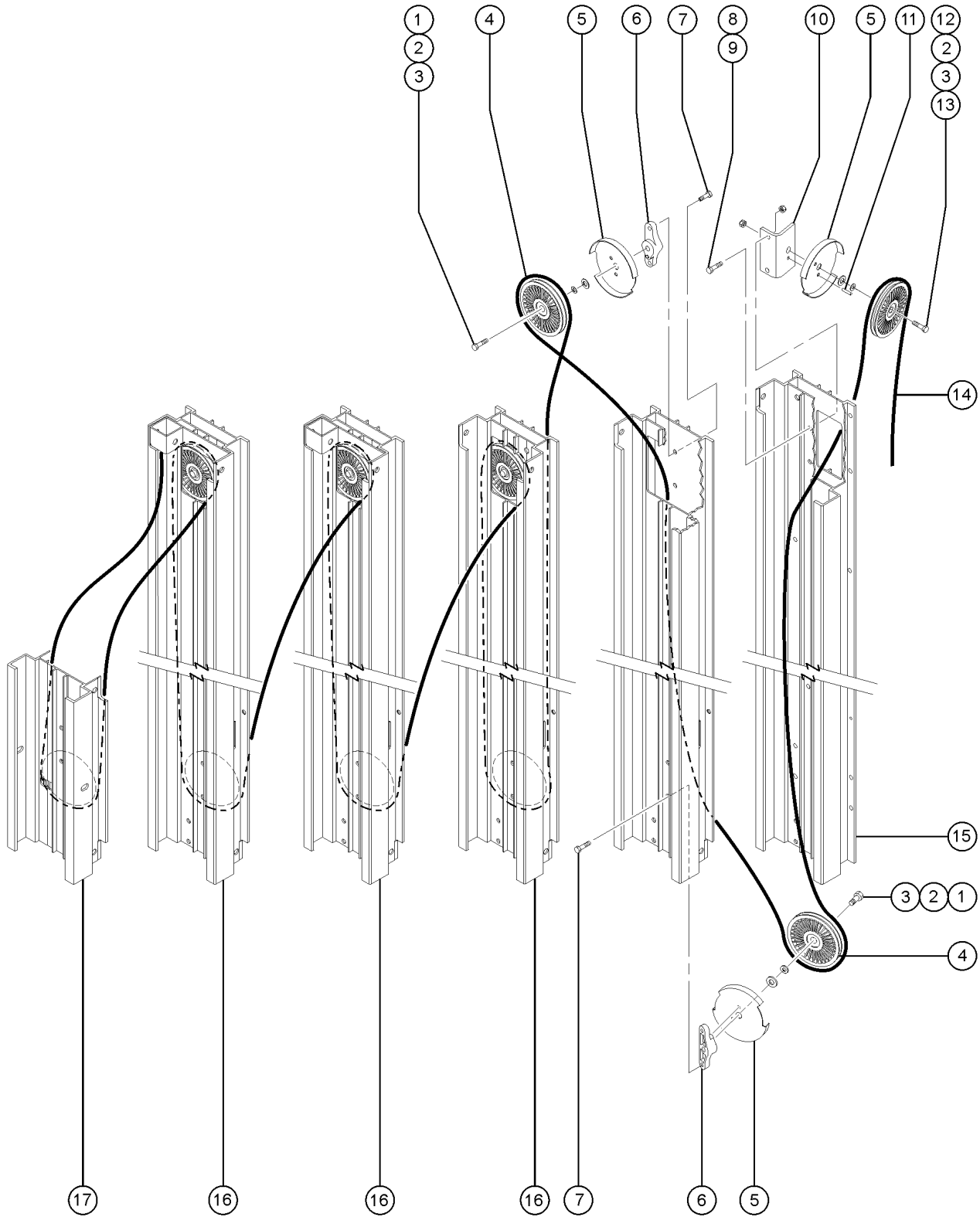


303.1 Mast Components, View 3  
(continued)

Item	Part No.	Description	Qty.
18A	57022	BUMPER,RUBBER,DOWNSTOP....4 SLA-15	
18B	57022	BUMPER,RUBBER,DOWNSTOP....6 SLA-20	
18C	57022	BUMPER,RUBBER,DOWNSTOP....8 SLA-25	
19	57023	BOLT,SHOULDER,3/8-16 1.417 LNG SLA-10, SLA-15, SLA-20 and SLA-25 models	
20	57021	TUBE,DOWNSTOP.....1 SLA-10	
20A	57021	TUBE,DOWNSTOP.....4 SLA-15	
20B	57021	TUBE,DOWNSTOP.....6 SLA-20	
20C	57021	TUBE,DOWNSTOP.....8 SLA-25	
21	57018	BLOCK,PLUNGER,DOWNSTOP.....1 SLA-10, SLA-15, SLA-20, SLA-25	
22	57024	PLATE,DOUBLER,DOWNSTOP.....1 SLA-10, SLA-15, SLA-20, SLA-25	
23	13066	WASHER,FLAT,.5 HARDENED	

*This Page Intentionally Left Blank*

304.1 Columns, Pulleys and Cables



304.1 Columns, Pulleys and Cables

Item	Part No.	Description	Qty.	Item	Part No.	Description	Qty.
1	10597	SCREW,HHC,1/2-13 X 1.25 GR5.....1 SLA-5	1	4D	49999	PULLEY W/BEARING 4.65X.5 '98**.....10 SLA-25	10
1A	10597	SCREW,HHC,1/2-13 X 1.25 GR5.....3 SLA-10	3	5	80680	GUARD, CABLE.....2 SLA-5	2
1B	10597	SCREW,HHC,1/2-13 X 1.25 GR5.....5 SLA-15	5	5A	80680	GUARD, CABLE.....4 SLA-10	4
1C	10597	SCREW,HHC,1/2-13 X 1.25 GR5.....7 SLA-20	7	5B	80680	GUARD, CABLE.....6 SLA-15	6
1D	10597	SCREW,HHC,1/2-13 X 1.25 GR5.....9 SLA-25	9	5C	80680	GUARD, CABLE.....8 SLA-20	8
2	37038	WASHER,FLAT,.5X .125,HARDENED*.....2 SLA-5	2	5D	80680	GUARD, CABLE.....10 SLA-25	10
2A	37038	WASHER,FLAT,.5X .125,HARDENED*.....4 SLA-10	4	6	32470	PULLEY MOUNT , SL-2.....1 SLA-5	1
2B	37038	WASHER,FLAT,.5X .125,HARDENED*.....6 SLA-15	6	6A	32470	PULLEY MOUNT , SL-2.....3 SLA-10	3
2C	37038	WASHER,FLAT,.5X .125,HARDENED*.....8 SLA-20	8	6B	32470	PULLEY MOUNT , SL-2.....5 SLA-15	5
2D	37038	WASHER,FLAT,.5X .125,HARDENED*.....10 SLA-25	10	6C	32470	PULLEY MOUNT , SL-2.....7 SLA-20	7
3	6052	WASHER,SHIM,.5 X .875 X .063.....2 SLA-5	2	6D	32470	PULLEY MOUNT , SL-2.....9 SLA-25	9
3A	6052	WASHER,SHIM,.5 X .875 X .063.....4 SLA-10	4	7	8255	SCREW,HHC,3/8-16 X .75.....2 SLA-5	2
3B	6052	WASHER,SHIM,.5 X .875 X .063.....6 SLA-15	6	7A	8255	SCREW,HHC,3/8-16 X .75.....6 SLA-10	6
3C	6052	WASHER,SHIM,.5 X .875 X .063.....8 SLA-20	8	7B	8255	SCREW,HHC,3/8-16 X .75.....10 SLA-15	10
3D	6052	WASHER,SHIM,.5 X .875 X .063...10 SLA-25	10	7C	8255	SCREW,HHC,3/8-16 X .75.....14 SLA-20	14
4	49999	PULLEY W/BEARING 4.65X.5 '98**.....2 SLA-5	2	7D	8255	SCREW,HHC,3/8-16 X .75.....20 SLA-25	20
4A	49999	PULLEY W/BEARING 4.65X.5 '98**.....4 SLA-10	4	8	6019	SCREW,HHC,3/8-16 X 1.25 GRD 5	
4B	49999	PULLEY W/BEARING 4.65X.5 '98**.....6 SLA-15	6	9	4828	NUT,NYLOCK,3/8-16	
4C	49999	PULLEY W/BEARING 4.65X.5 '98**.....8 SLA-20	8	10	33700	PULLEY MOUNT,#1 COLUMN,GRY,SLC.....1	1
				11	32483	PIN,ROLL,.25 X .50.....1	1
				12	8177	SCREW,HHC,1/2-13 X 1.5	
				13	6198	NUT,NYLOCK,1/2-13	
				14	6443	CABLE ASSEMBLY-M.5**.....1 SLA-5; Does Not Include Cable Replacement Coupler	1
				14A	6444	CABLE ASSY SLA/MNM 7/32" 360" SLA-10; Does Not Include Cable Replacement Coupler	



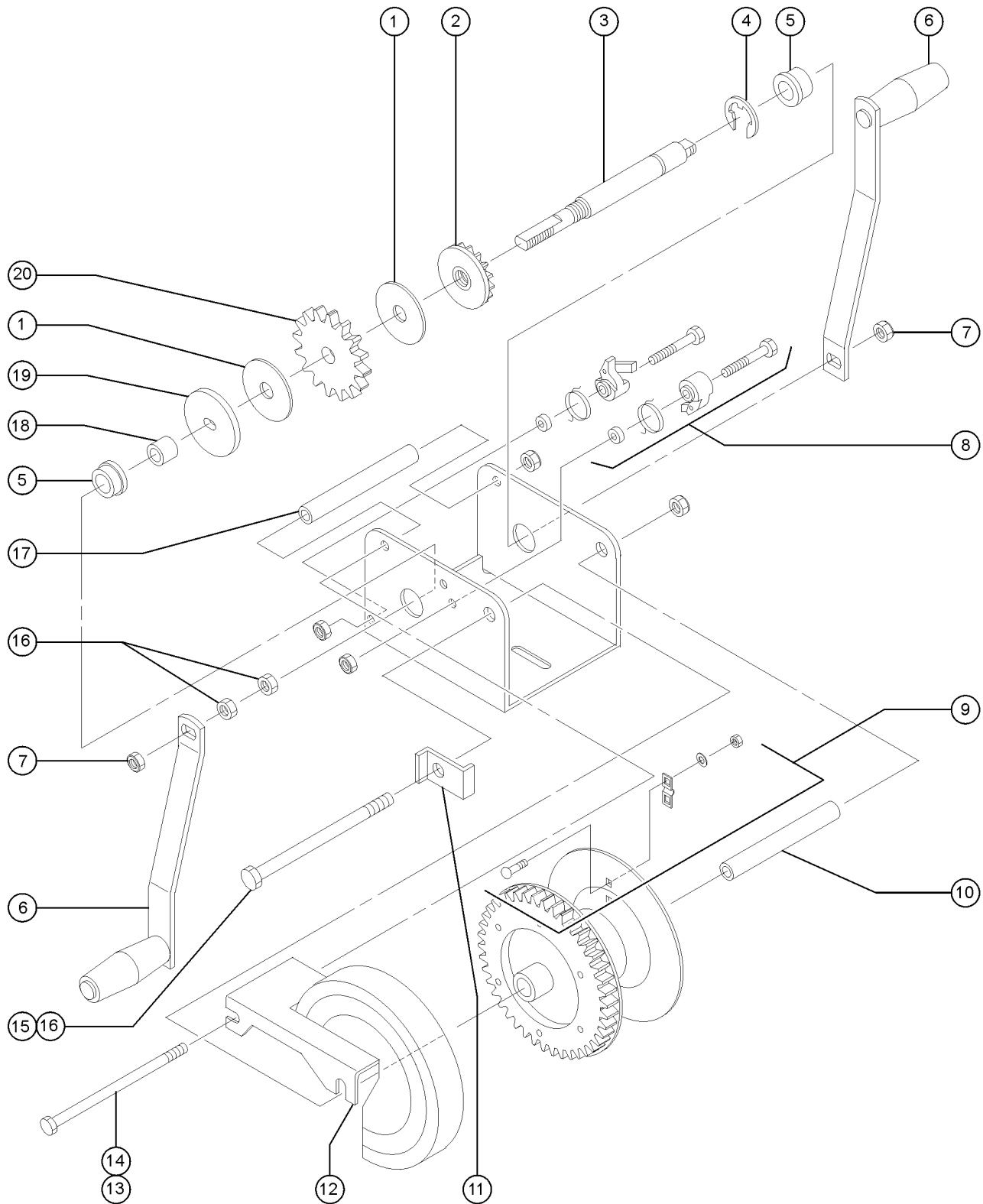
304.1 Columns, Pulleys and Cables  
(continued)

Item	Part No.	Description	Qty.	Item	Part No.	Description	Qty.
14B	32903	CABLE ASSY SL15 507" 7/32" *** SLA-15; Does Not Include Cable Replacement Coupler		17C	57035	CARRIAGE,SL ADVANTAGE(20,25).....1 SLA-20 (from SN 5599-3405)	1
14C	32904	CABLE ASSY,SL/ST20 669" 7/32"* SLA-20; Does Not Include Cable Replacement Coupler		17D	57035	CARRIAGE,SL ADVANTAGE(20,25).....1 SLA-25 (from SN 5599-3828)	1
14D	32905	CABLE ASSY,SL/ST25 813" 7/32"* SLA-25; Does Not Include Cable Replacement Coupler					
--	12402	CABLE REPLACEMENT COUPLER <i>Sold Separately</i>					
--	52701	VIDEO,NTSC,SLA,CABLING PROCDR <i>Sold Separately</i>					
15	57032-S	COLUMN#1,SL ADVANTAGE SERV.....1 SLA-5 (from SN 5599-3746)	1				
15A	57032-S	COLUMN#1,SL ADVANTAGE SERV.....1 SLA-10 (from SN 5599-3361)	1				
15B	57032-S	COLUMN#1,SL ADVANTAGE SERV.....1 SLA-15 (from SN 5599-3362)	1				
15C	57032-S	COLUMN#1,SL ADVANTAGE SERV.....1 SLA-20 (from SN 5599-3405)	1				
15D	57032-S	COLUMN#1,SL ADVANTAGE SERV.....1 SLA-25 (from SN 5599-3828)	1				
16	57033-S	COLUMN#2,SL ADVANTAGE SERV.....1 SLA-10 (from SN 5599-3361)	1				
16A	57033-S	COLUMN#2,SL ADVANTAGE SERV.....1 SLA-15 (from SN 5599-3362)	1				
16B	57033-S	COLUMN#2,SL ADVANTAGE SERV.....1 SLA-20 (from SN 5599-3405)	1				
16C	57033-S	COLUMN#2,SL ADVANTAGE SERV.....1 SLA-25 (from SN 5599-3828)	1				
17	57034	CARRIAGE,SL ADVANTAGE(5,10,15).....1 SLA-5 (from SN 5599-3746)	1				
17A	57034	CARRIAGE,SL ADVANTAGE(5,10,15).....1 SLA-10 (from SN 5599-3361)	1				
17B	57034	CARRIAGE,SL ADVANTAGE(5,10,15).....1 SLA-15 (from SN 5599-3362)	1				



*This Page Intentionally Left Blank*

305.1 Winch Components, One-speed

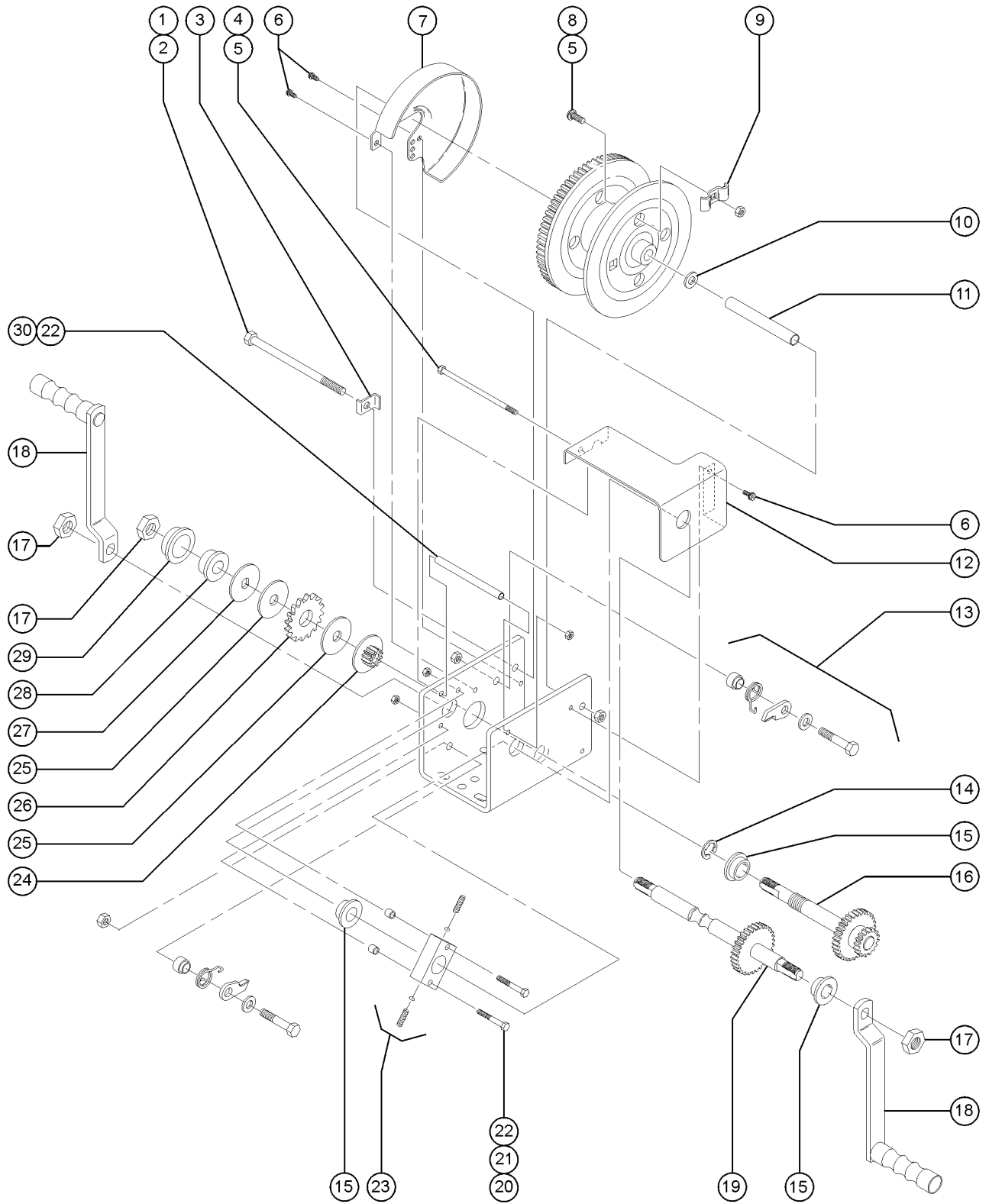




## 305.1 Winch Components, One-speed

Item	Part No.	Description	Qty.
--	107157	1 SPD WINCH ASSY W/ SYM DECAL <i>Asia, S. America and European models</i>	
--	32945	WINCH, W/DECAL 1SPEED SL/ST <i>USA, Canada and Australia models (word decals)(handle not included)</i>	
1	7571	BRAKE DISK, .5 BORE, K-1550.....	2
2	7590	PINION GEAR AND DISC K-1550...	1
3	32891	SHAFT, PINION.....	1
4	6200	RETAINING RING.....	1
5	6199	BUSHING, SMALL PINION, FULTON.....	2
6	33143	WINCH HANDLE 6" STD.....	2
		<i>SLA-5</i>	
6A	33144	WINCH HANDLE 8" STD. <i>SLA-10, SLA-15, SLA-20, SLA-25</i>	
7	6086	NUT, LP NYLOCK, 1/2-13	
8	40458	RATCHET PAWL KIT.....	1
9	6190	CABLE KEEP. KIT (BRACKET TYPE)*.....	1
--	25625	NUT, HEX, 10-24	
--	80159	CARRIAGE BOLT	
--	80160	KEEPER-CABLE (32525)	
--	80161	WASHER-STAR, INTERN, 5/8" (32525)	
10	6184	SPACER, DRUM BOLT, K-1550.....	1
11	31946	WINCH BRACKET, DRUM BOLT LOCK.....	1
12	6770	WINCH GEAR COVERS, K-1500.....	1
13	7256	SCREW, HHC, 5/16-18 X 6 GRD.2	
14	6782	NUT, NYLOCK, 5/16-18	
15	6185	BOLT, DRUM SPACER.....	1
16	6034	NUT, HEX, JAM, 1/2-13	
17	7584	FRAME SPACER, K-1550.....	1
18	32890	SPACER, PINION SHAFT.....	1
19	7591	WINCH PINION PLATE, K-1550.....	1
20	6777	RATCHET GEAR, K-1550 1/2" I.D.....	1

306.1 Winch Components, Two-speed

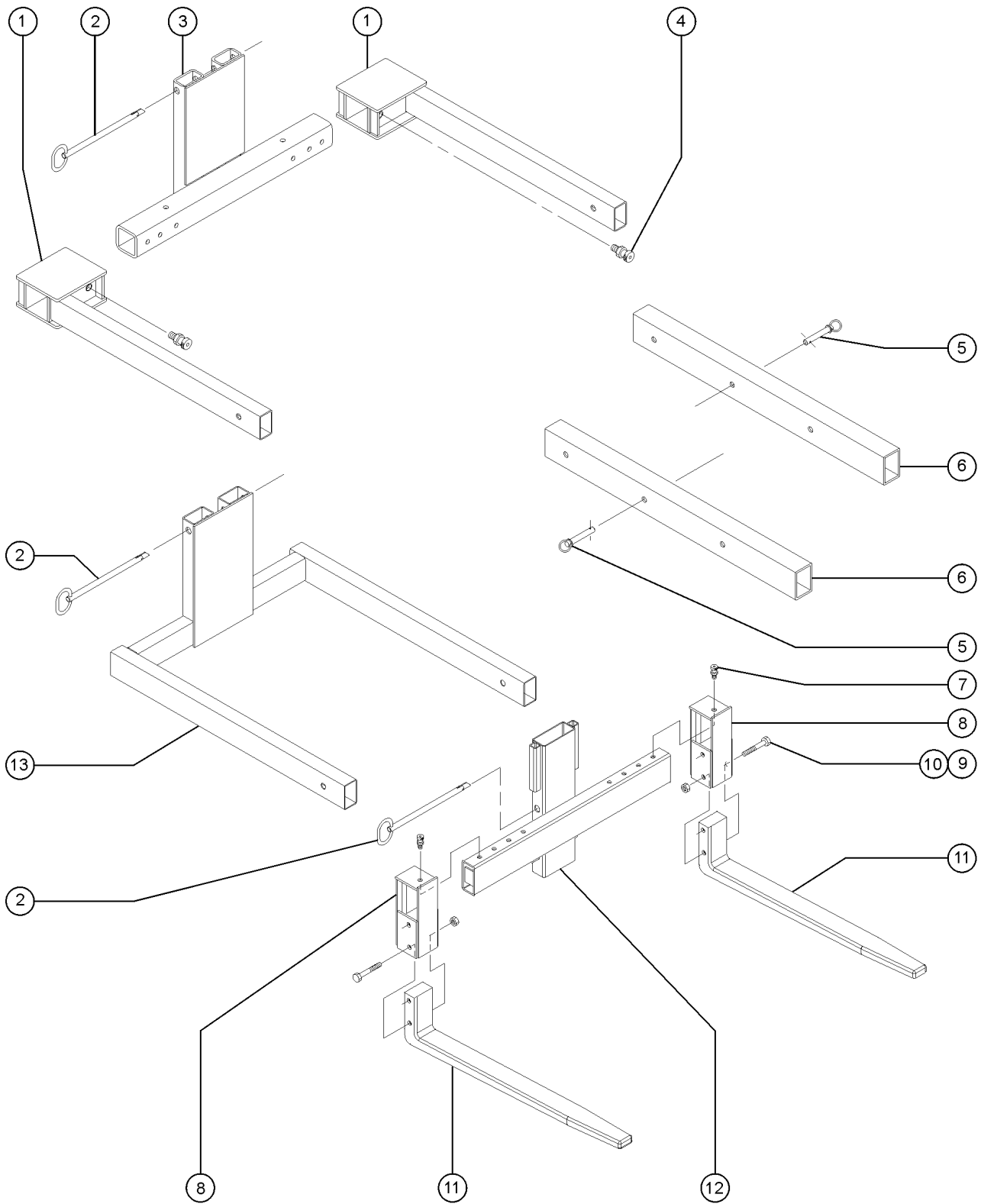


306.1 Winch Components, Two-speed

Item	Part No.	Description	Qty.	Item	Part No.	Description	Qty.
--	107158	2 SPD WINCH ASSY W/ SYM DECAL <i>Asia, S. America and European models</i>		24	80157	GEAR-PINION (80056).....	1
--	32946	WINCH W/DECAL,2 SPEED*** <i>USA, Canada and Australia models (word decals)(handle not included)</i>		25	37061	BRAKE FACE,DLB800.....	2
--	40130	CABLE KEEPER KIT (33090) <i>includes items 5, 8 and 9</i>		26	37062	RATCHET GEAR, DLB800.....	1
1	78037	SCREW,HHC,3/8-16 X 5.5		27	40122	WASHER,DOUBLE D.....	1
2	4828	NUT,NYLOCK,3/8-16		28	40123	SPACER.....	1
3	80145	LOCK-BOLT, REEL (80056).....	1	29	85182	SINTERED IRON BEARING,1-1/4**.....	1
4	80146	SCREW,HHC,1/4-20 X 5.25(80056)		30	40128	BASE SPACER.....	1
5	6091	NUT,NYLOCK,1/4-20					
6	80147	SCREW-THRD FORM,HH-SLT, 1/2"					
7	80148	COVER - REEL (80056).....	1				
8	80149	BOLT,CARRIAGE,1/4-20 X .5,G2					
9	37065	CABLE KEEPER, DLB800.....	1				
10	80150	WASHER-FLAT, 1/2" (80056)					
11	40113	REEL SPACER.....	1				
12	80151	COVER-GEAR (80056).....	1				
13	40117	RATCHET PAWL KIT, (33090).....	1				
--	4828	NUT,NYLOCK,3/8-16					
--	5397	WASHER,FLAT,USS,5/16",Y					
--	80152	SPACER-RATCHET (80056)					
--	80153	SPRING-RATCHET (80056)					
--	80154	PAWL-RATCHET (80056)					
--	8516	SCREW,HHC,3/8-16 X 1.50					
14	40116	E-RING, 3/4.....	1				
15	40126	BEARING, SINTERED IRON, 3/4					
16	80155	SHAFT ASSY,INTERMED. (80056).....	1				
17	38028	NUT,LP NYLOCK,5/8-11					
18	40125	HANDLE ASSY., 8-INCH, OFFSET.....	2				
19	72264	SHAFT ASSY, PRIMARY.....	1				
20	6145	SCREW,HHC,1/4-20 X 1.5					
21	40115	BRAKE SPRING SPACER.....	2				
22	6889	NUT,LP NYLOCK,1/4-20					
23	40127	DETENT BLOCK ASSY.....	1				
--	40509	DETENT SPRING.....	2				
--	40510	DETENT BALL.....	2				
--	80156	BLOCK-DETENT (80056).....	1				

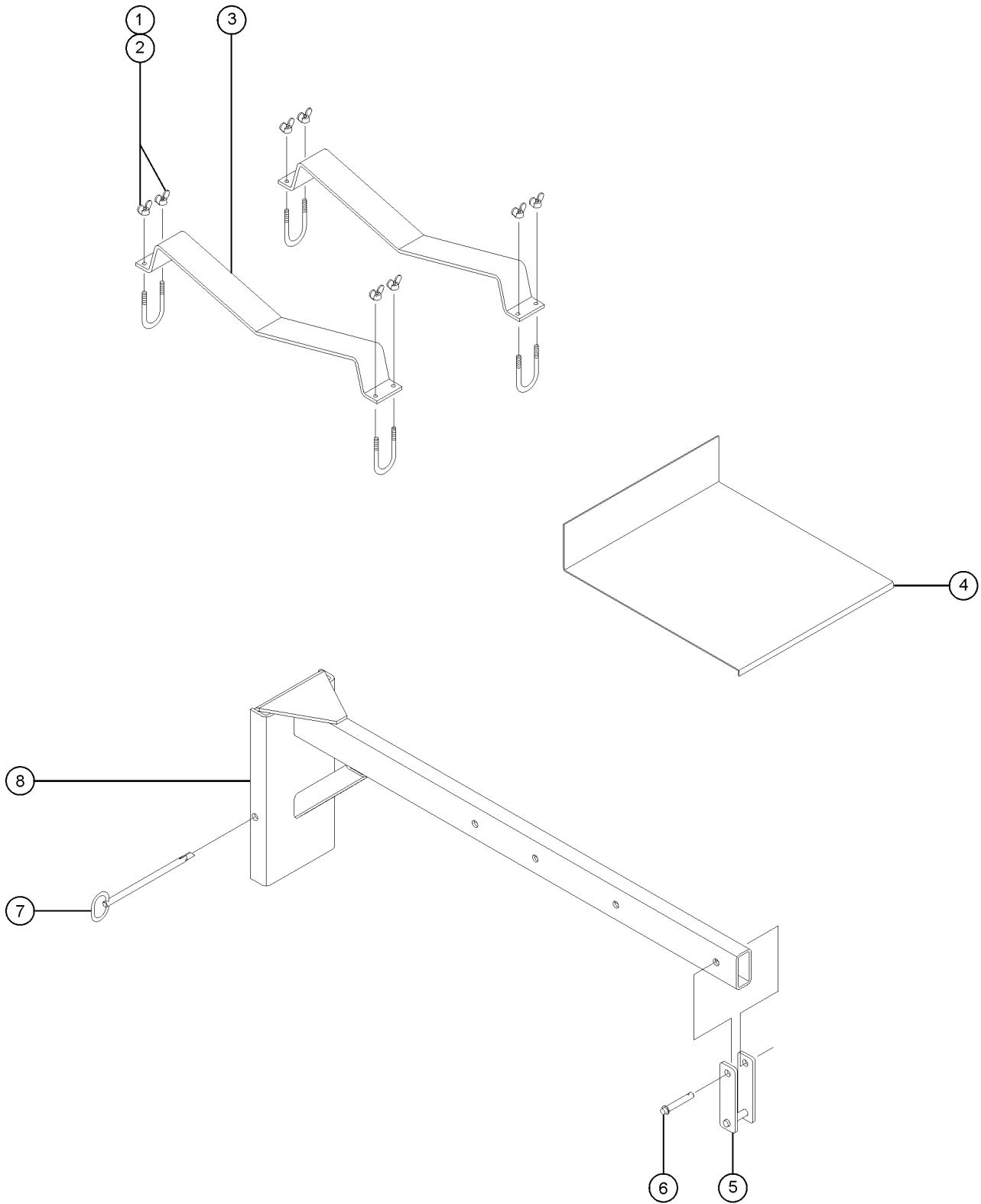


401.1 Forks



Item	Part No.	Description	Qty.
--	107161	ADJUST. FORK ASSY W/ SYM DECAL <i>Asia, S. America and European models; includes Items 1- 4</i>	
--	32564-S	SL ADJUSTABLE FORK ASSEMBLY <i>USA, Canadian and Australian models; includes Items 1- 4</i>	
1	32548-S	WELDMENT,ARM ADJ. FORK-"BLUE" .....	2
2	48301	PIN,TOGGLE,.50 X 8.13*** .....	3
3	32908	CARRIER,FORK,ADJ.W/DECAL,SL2.1 <i>USA, Canadian and Australian models</i>	
3A	107162	ADJUST. CARRIER ASSY W/ DECALS <i>Asia, S. America and European models</i>	
4	33674	PIN,LOCK,SHORT*** .....	2
5	80679	PIN,BALL RET.-.5 X 2.7.....	2
6	33366-S	FORK EXTENSION, SINGLE*** .....	2
7	32375	PIN,LOCK,LONG*** .....	2
8	32541-S	WELDMENT,FLATFORK SOCKET.....	2
9	8220	SCREW,HHC,1/2-13 X 4	
10	6086	NUT,LP NYLOCK,1/2-13	
11	32539	CASTING,FLAT FORK SUPERLIFT 2.....	2
12	32907	CARRIER,FORK,FLAT W/DECAL,SL2.....	1
		<i>USA, Canadian and Australian models</i>	
12A	107163	FLT FORKS CARRIER ASSY W/DECAL <i>Asia, S. America and European models</i>	
13	32906	FORK,STANDARD,W/DECAL,SLA2.1 <i>USA, Canadian and Australian models</i>	
13A	107164	STANDARD FORK W/ SYMBOL DECALS <i>Asia, S. America and European models</i>	

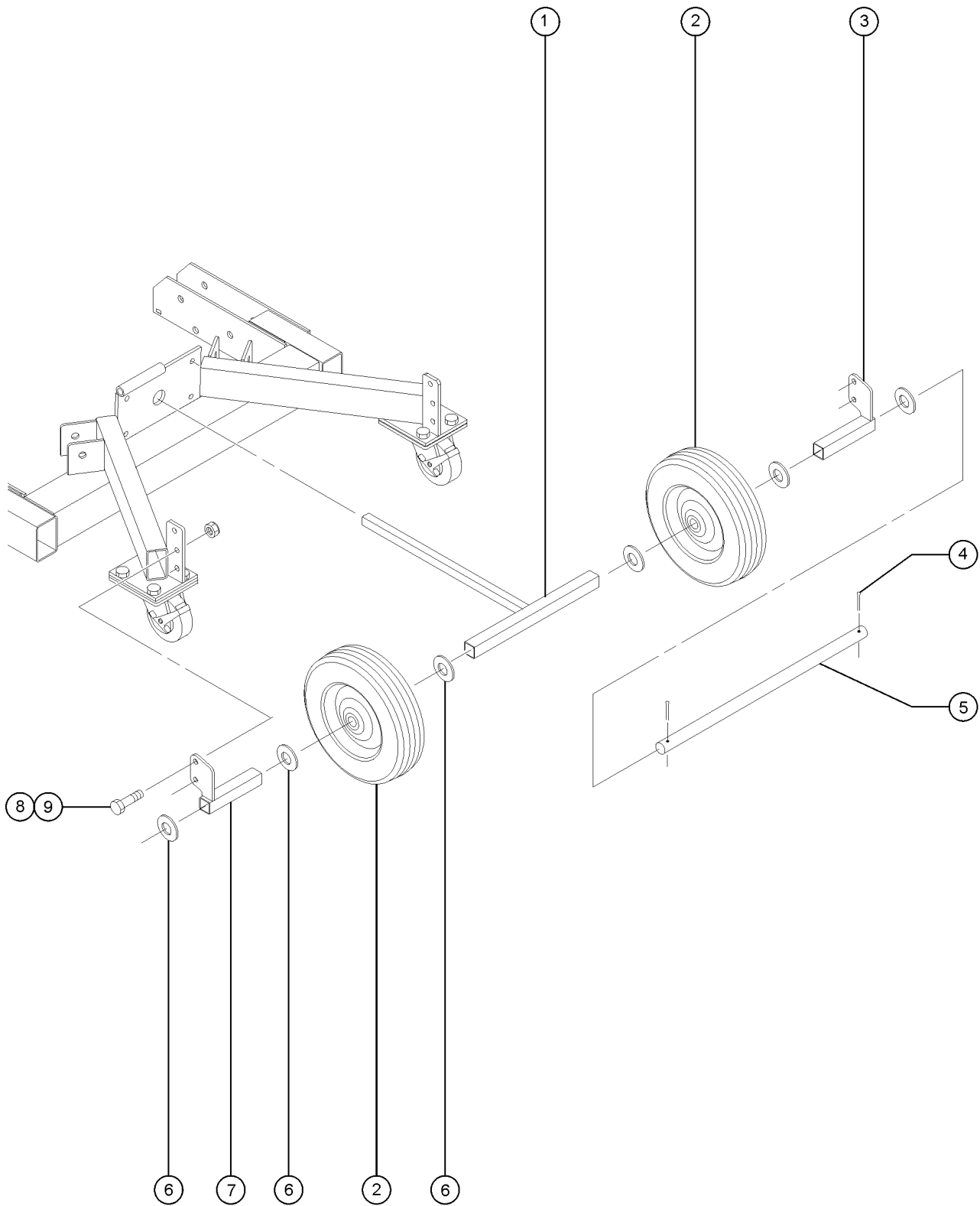
402.1 Pipe Cradle, Load Platform and Boom Arm



## 402.1 Pipe Cradle, Load Platform and Boom Arm

Item	Part No.	Description	Qty.
1	8170	NUT,WING,1/4-20	
2	33045	U-BOLT,1/4-20 SL2 PIPE CRADLE.....	4
3	80597	PIPE CRADLE, BLUE.....	2
4	32937	LOAD PLATFORM W/DECAL,SLA.....	1
		<i>USA, Canadian and Australian models</i>	
4A	107165	LOAD PLATFORM ASSY W/ DECALS <i>Asia, S. America and European models</i>	
5	32579-S	WELDMNT,CLEVIS STD. BOOM.....	1
6	80679	PIN,BALL RET-.5 X 2.7.....	1
7	48301	PIN,TOGGLE,.50 X 8.13***.....	1
8	32567-S	SLA/SLC STD.BOOM ASSY/SERVICE.....	1
		<i>USA, Canadian and Australian models; includes items 5 - 7</i>	
8A	107166	BOOM ARM ASSY W/ SYMBOL DECALS <i>Asia, S. America and European models; includes items 5 - 7</i>	

403.1 Rear Wheels





Item	Part No.	Description	Qty.
--	35848-S	SL REAR TRANSPORT WHEEL ASSY	
1	33831-S	WHEEL SPACER WELDMENT,SL"GRAY".....	1
2	35064	WHEEL,SOLID RUBBER,10X.75X2.75..... (to SN SLA07-37479)	2
2A	124000	WHEEL,TRANSPORT SL 10X.75X2.75 (from SN SLA07-37480)	
3	33830-S	WHEEL SPACER MOUNT WELD,RH,SL.....	1
4	6094	PIN,COTTER, .125 X 1.....	2
5	57237	AXLE ROD, TRANSPORT WHEEL,SL.....	1
6	6564	WASHER,SHIM,.765X1.312 X.093**.....	6
7	33829-S	WHEEL SPACER MNT WELD LH,SL.....	1
8	6019	SCREW,HHC,3/8-16 X 1.25 GRD 5	
9	4828	NUT,NYLOCK,3/8-16	

## Part Number Index

The Part Number Index is a numeric index of all part numbers included in this manual. The index shows what page(s) the part is used on.

Part Number	Page	Part Number	Page	Part Number	Page	Part Number	Page
100309	19, 21	32715	11	4828	15, 17, 19, 21,	80151	35
10597	23, 29-30	32716	11		25-26, 29-30,	80152	35
10598	19	32717	11		35, 41	80153	35
107153	15, 17	32718	11	48301	15, 17, 37, 39	80154	35
107154	15	32770	11	49991	21	80155	35
107155	21	32775	11	49999	29-30	80156	35
107156	21	32879	19	5224	19	80157	35
107157	33	32880	19	52675	11	80159	33
107158	35	32881	19	52701	30	80160	33
107161	37	32882	19	52983	11, 13	80161	33
107162	37	32883	19	5397	35	80162	21
107163	37	32884	19	57016	23	80176-S	17
107164	37	32885	11	57018	26	80177-S	17
107165	39	32890	33	57019	25-26	80178-S	17
107166	39	32891	33	57021	26	80435	21
107171	15	32903	30	57022	25-26	80597	39
107172	15	32904	30	57023	26	80679	37, 39
107173	15	32905	30	57024	26	80680	29-30
107174	15	32906	37	57032-S	30	80939	11, 13
107175	15	32907	37	57033-S	30	80987	23
107181	15	32908	37	57034	30	8170	39
107182	15	32937	39	57035	30	8177	29-30
107183	15	32938	11	57237	41	8220	37
107184	15	32939	11	57736	19	82487	13
107185	15	32945	33	57740	15, 17	8255	29-30
109560	21, 23, 25-26	32946	35	57746	19	82964	13
109577	21	33045	39	57783	19	8516	15, 17, 19, 35
109578	21	33143	33	57788	21	85182	35
11337	19	33144	33	58094	19	97529	11
11890	15, 17	33148	17	58750	17	97532	13
11978	21	33251	17	6019	15, 17, 21, 25-	97539	13
12013	25-26	33366-S	37		26, 29-30, 41	97541	13
12016	15, 17	33373	19	6033	19	97542	13
12343	21	33385	21	6034	19, 33	97545	13
124000	41	33468	11	6052	23, 25-26, 29-30	97546	13
12402	30	33540	21	6086	19, 23, 33, 37	97547	11
124819	21	33658	15, 17	6091	21, 35		
13005	21	33670	15, 17	6094	41		
13066	23, 26	33674	37	6095	19, 21, 23, 25-26		
21443	15, 17	33700	29-30	6097	15, 17, 19, 21		
25625	33	33811	25-26	6145	35		
28487	17	33829-S	41	6175	15, 19, 21		
31072	11	33830-S	41	6184	33		
31822	21	33831-S	41	6185	33		
31946	33	33843	21	6190	33		
32375	37	35064	41	6198	21, 23, 25-26,		
32470	29-30	35101	25-26		29-30		
32473	21, 23, 25-26	35212	19	6199	33		
32474	21, 23, 25-26	35408	17, 25-26	6200	33		
32475	21, 23, 25-26	35443	25-26	6326	21		
32483	29-30	35463	25-26	6443	29-30		
32499	19	35848-S	41	6444	29-30		
32509	19	37038	29-30	6564	21, 41		
32519	19	37061	35	6587	21		
32522	25-26	37062	35	6600-S	21		
32524	19	37065	35	6653	21		
32531	17	37202	21	6732	19, 21		
32532	17	37481	19	6770	33		
32539	37	38028	35	6777	33		
32541-S	37	40113	35	6782	33		
32548-S	37	40115	35	6889	35		
32564-S	37	40116	35	72264	35		
32567-S	39	40117	35	7256	33		
32576	19	40122	35	7265	21		
32577	19	40123	35	7571	33		
32578P	19	40125	35	7584	33		
32579-S	39	40126	35	7590	33		
32686	11	40127	35	7591	33		
32687	11	40128	35	78037	35		
32689	11, 13	40130	35	80145	35		
32690	11, 13	40255	17	80146	35		
32691	11, 13	40458	33	80147	35		
32692	11, 13	40509	35	80148	35		
32693	11, 13	40510	35	80149	35		
32714	11	46683	17	80150	35		

The Part Description Index is an alphabetical index of all part descriptions included in this manual. The index shows what page(s) the part is used on.

**1**  
1 SPD WINCH ASSY W/ SYM DECAL.....33

**2**  
2 SPD WINCH ASSY W/ SYM DECAL.....35

**A**  
ADJUST. CARRIER ASSY W/ DECALS.....37  
ADJUST. FORK ASSY W/ SYM DECAL.....37  
ASSY,PIN & LANYARD\*\*\*.....19, 21  
AXLE ROD, TRANSPORT WHEEL,SL.....41  
AXLE TUBE, SL2 LEG.....19

**B**  
BASE ASSY W/ SYM DECALS (SLA5).....15  
BASE ASSY W/ SYM DECALS(SLA10).....15  
BASE ASSY W/ SYM DECALS(SLA15).....15  
BASE ASSY W/ SYM DECALS(SLA20).....15  
BASE ASSY W/ SYM DECALS(SLA25).....15  
BASE ASSY W/ WRD DECALS (SLA5).....15  
BASE ASSY W/ WRD DECALS(SLA10).....15  
BASE ASSY W/ WRD DECALS(SLA15).....15  
BASE ASSY W/ WRD DECALS(SLA20).....15  
BASE ASSY W/ WRD DECALS(SLA25).....15  
BASE ASSY-STRADDLE, SLA-10.....17  
BASE ASSY-STRADDLE, SLA-15.....17  
BASE ASSY/STRADDLE, SLA-5.....17  
BASE SPACER.....35  
BEARING, SINTERED IRON, 3/4.....35  
BLOCK,END,DOWNSTOP.....25-26  
BLOCK,PLUNGER,DOWNSTOP.....26  
BLOCK,RETAINING; SLA STRADLE.....17  
BLOCK-DETENT (80056).....35  
BOLT, DRUM SPACER.....33  
BOLT,CARRIAGE,1/4-20 X .5,G2.....35  
BOLT,SHOULDER,3/8-16 1.417 LNG.....26  
BOLT-ROLLER,1/2-13X1.84 ZINC.....21, 23,  
25-26  
BOOM ARM ASSY W/ SYMBOL DECALS.....39  
BRACKET, STAB.MOUNT,"GRAY".....19  
BRAKE DISK,.5 BORE,K-1550.....33  
BRAKE FACE,DLB800.....35  
BRAKE SPRING SPACER.....35  
BUMPER,RUBBER,DOWNSTOP.....25-26  
BUSHING, SMALL PINION, FULTON.....33  
BUSHING,6 X 2 WHEEL.....21

**C**  
CABLE ASSEMBLY-M.5\*\*.....29-30  
CABLE ASSY SL15 507" 7/32" \*\*\*.....30  
CABLE ASSY SLA/MNM 7/32" 360".....29-30  
CABLE ASSY,SL/ST20 669" 7/32"\*.....30  
CABLE ASSY,SL/ST25 813" 7/32"\*.....30  
CABLE KEEP.KIT (BRACKET TYPE)\*.....33  
CABLE KEEPER KIT (33090).....35  
CABLE KEEPER, DLB800.....35  
CABLE REPLACEMENT COUPLER.....30  
CAP,INSTRUCTION TUBE (RED).....21  
CARRIAGE BOLT.....33  
CARRIAGE,SL ADVANTAGE(20,25).....30  
CARRIAGE,SL ADVANTAGE(5,10,15).....30  
CARRIER,FORK,ADJ.W/DECAL,SL2.....37  
CARRIER,FORK,FLAT W/DECAL,SL2.....37

CASTER,PL,SW LOCK, SB, 5 X 2.....15, 17  
CASTER,PL,SW, 4 X 2.....19  
CASTER,POST,SW,3.5X1.25,1/2-13.....19  
CASTING,FLAT FORK SUPERLIFT 2.....37  
CLAMP TUBE,STABILIZER BLUE.....19  
CLAMP,1.88,#30 X 1/4,RUB CUSH.....21  
COLUMN#1,SL ADVANTAGE SERV.....30  
COLUMN#2,SL ADVANTAGE SERV.....30  
COUPLER BAR ASSEMBLY,SLA&C,ST2...25-  
26  
COVER - REEL (80056).....35  
COVER-GEAR (80056).....35

**D**  
DECAL,2 SPD.WINCH SYMB.....13  
DECAL,2 SPD.WINCH\*\*.....11  
DECAL,CAUTION,DAMAGD MACHINE.....11  
DECAL,CAUTION,MOVING PARTS.....11  
DECAL,CAUTION,MOVING PARTS SYM.....13  
DECAL,CRUSHING HAZ/BRAKE LOCK.....11  
DECAL,DANGER,ELEC.HAZ.....11, 13  
DECAL,GENIE SUPERLIFT ADVANTAG.....11,  
13  
DECAL,LABEL,OPER.MAN.STORAGE.....11  
DECAL,LABEL,WINCH ONLY.....11  
DECAL,LABEL,WINCH ONLY SYMB.....13  
DECAL,MODEL HEIGHT SL10.....11, 13  
DECAL,MODEL HEIGHT SL15.....11, 13  
DECAL,MODEL HEIGHT SL20.....11, 13  
DECAL,MODEL HEIGHT SL25.....11, 13  
DECAL,MODEL HEIGHT SL5.....11, 13  
DECAL,NOTICE BOOM SETUP.....11  
DECAL,NOTICE FLAT FORK SETUP.....11  
DECAL,OPERATING INSTRUCT. SLA.....11  
DECAL,SILENT WINCH.....11  
DECAL,SYMBOL-READ THE MANUAL.....13  
DECAL,WARNING ADJ. FORK SETUP.....11  
DECAL,WARNING BOOM SAFETY.....11  
DECAL,WARNING FLAT FORK SAFETY.....11  
DECAL,WARNING STD.FORK SAFETY.....11  
DECAL,WARNING,BRAKE LOCK SYMB.....13  
DECAL,WARNING,FALL HAZARD.....11  
DECAL,WARNING,LOAD CHART SLA.....13  
DECAL,WARNING,NO RIDERS.....11  
DECAL,WARNING,NO RIDERS SYMB.....13  
DETENT BALL.....35  
DETENT BLOCK ASSY.....35  
DETENT SPRING.....35  
DOWN STOP.....25-26

**E**  
E CLIP,.875 IN.SL LEG.....19  
E-RING, 3/4.....35

**F**  
FLT FORKS CARRIER ASSY W/DECAL.....37  
FORK EXTENSION, SINGLE\*\*\*.....37  
FORK,STANDARD,W/DECAL,SLA2.....37  
FRAME SPACER,K-1550.....33

**G**  
GEAR-PINION (80056).....35  
GLIDE BUTTON,SIDE,GLL,100 TK.....15, 17  
GUARD, CABLE.....29-30  
GUARD,ROLLER, SL2,.....21, 23, 25-26

**H**  
HANDLE ASSY., 8-INCH, OFFSET.....35  
HANDLE GRIP, RUBBER .75 X 4.5.....21  
HLD DOWN KIT, LONG.....15  
HLD DOWN KIT,SHORT.....15, 17  
HOLD DOWN KIT W/DECAL SL SHORT.....17

**I**  
INSTRUCT.TUBE SERVICE KIT.....21

**K**  
KEEPER-CABLE (32525).....33  
KIT, CABLE ANCHOR BRK, SLC/ST\*.....23  
KIT,CBL GRD,W/WRD DCALS,SLA.....21  
KNOB,STRADDLE BASE SL2.....17

**L**  
LATCH PLATE,STABILIZER SL2.....19  
LOAD PLATFORM ASSY W/ DECALS.....39  
LOAD PLATFORM W/DECAL,SLA.....39  
LOADING WHEEL ASSY ST/SL.....21  
LOADING WHEEL ASSY W DECAL.....21  
LOCK-BOLT, REEL (80056).....35

**M**  
MAST STIFFENER,LT,BLUE.....21  
MAST STIFFENER,RT,BLUE.....21

**N**  
NUT,HEX,10-24.....33  
NUT,HEX,JAM,1/2-13.....19, 33  
NUT,LP NYLOCK,1/2-13.....19, 23, 33, 37  
NUT,LP NYLOCK,1/4-20.....35  
NUT,LP NYLOCK,5/8-11.....35  
NUT,NYLOCK,1/2-13.....21, 23, 25-26, 29-30  
NUT,NYLOCK,1/4-20.....21, 35  
NUT,NYLOCK,3/8-16.....15, 17, 19, 21, 25-26,  
29-30, 35, 41  
NUT,NYLOCK,5/16-18.....33  
NUT,SQUARE 3/8-16 NC, PLATED.....17, 25-  
26  
NUT,WING,1/4-20.....39

**P**  
PAWL-RATCHET (80056).....35  
PIN,BALL RET.-.5 X 2.7.....37, 39  
PIN,COTTER,.125 X .75.....15, 17  
PIN,COTTER,.125 X 1.....41  
PIN,LOCK,LONG\*\*\*.....37  
PIN,LOCK,SHORT\*\*\*.....37  
PIN,ROLL,.25 X .50.....29-30  
PIN,ROLL,.25 X 1.25.....19  
PIN,TOGGLE,.50 X 8.13\*\*\*.....15, 17, 37, 39  
PINION GEAR AND DISC K-1550.....33  
PIPE CRADLE, BLUE.....39  
PIVOT TUBE SL2 LEG.....19  
PIVOT TUBE,STABILIZER.....19  
PLATE,DOUBLER,DOWNSTOP.....26  
PLATE,DOUBLER,SL MAST.....23  
PULLEY MOUNT , SL-2.....29-30  
PULLEY MOUNT,#1 COLUMN,GRY,SLC.....29-  
30

## Part Description Index (continued)

PULLEY W/BEARING 4.65X.5 '98\*\*.....29-30

**R**

RATCHET GEAR, DLB800.....35  
 RATCHET GEAR,K-1550 1/2" I.D.....33  
 RATCHET PAWL KIT.....33  
 RATCHET PAWL KIT, (33090).....35  
 REEL SPACER.....35  
 RETAINING RING.....33  
 RIVET,STEEL,P .25 X .375.....21

**S**

SAFETY BRAKE ASSY(SQ.NUT)SL2\*\*.....25-26  
 SCREW,BHHS,3/8-16 X 1.....17  
 SCREW,FHS,3/8-16 X 1.5.....25-26  
 SCREW,HHC,1/2-13 X 1.25 GR5.....23, 29-30  
 SCREW,HHC,1/2-13 X 1.5.....29-30  
 SCREW,HHC,1/2-13 X 3.....19  
 SCREW,HHC,1/2-13 X 3.25.....19, 21  
 SCREW,HHC,1/2-13 X 4.....37  
 SCREW,HHC,1/2-13 X 6,GRD.8.....21  
 SCREW,HHC,1/4-20 X 1.5.....35  
 SCREW,HHC,1/4-20 X 3.....21  
 SCREW,HHC,1/4-20 X 5.25(80056).....35  
 SCREW,HHC,3/8-16 X .75.....29-30  
 SCREW,HHC,3/8-16 X 1.....15, 19, 21  
 SCREW,HHC,3/8-16 X 1.25 GRD 5.....15, 17, 21, 25-26, 29-30, 41  
 SCREW,HHC,3/8-16 X 1.50.....15, 17, 19, 35  
 SCREW,HHC,3/8-16 X 2.....19  
 SCREW,HHC,3/8-16 X 3.....21  
 SCREW,HHC,3/8-16 X 5.5.....35  
 SCREW,HHC,5/16-18 X 6 GRD.2.....33  
 SCREW-THRD FORM,HH-SLT, 1/2".....35  
 SERIAL # LABEL,MAT LIFT & SS\*\*.....11, 13  
 SHAFT ASSY, PRIMARY.....35  
 SHAFT ASSY,INTERMED. (80056).....35  
 SHAFT,PINION.....33  
 SHIM,.375 X .063.....25-26  
 SHIM,.75 X.45 X.064.....15, 17  
 SINTERED IRON BEARING,1-1/4\*\*.....35  
 SKID PAD.....15, 17  
 SL REAR TRANSPORT WHEEL ASSY.....41  
 SL ADJUSTABLE FORK ASSEMBLY.....37  
 SLA STABILIZER SET ASSY.SERV.....19  
 SLA/SLC STD.BOOM ASSY/SERVICE.....39  
 SPACER.....35  
 SPACER, DRUM BOLT, K-1550.....33  
 SPACER,MAST STIFFENER.....21  
 SPACER,PINION SHAFT.....33  
 SPACER-RATCHET (80056).....35  
 SPACER-STRADDLE BASE-3".....17  
 SPRING,HOLDOWN SL2E.....15, 17  
 SPRING,STABILIZER LATCH SL2.....19  
 SPRING-RATCHET (80056).....35  
 STABILIZER STRUT,ASSY.....19  
 STANDARD FORK W/ SYMBOL DECALS.....37  
 STRUT,LH,SL2.....19  
 STRUT,RH,SL2.....19

**T**

TUBE,DOWNSTOP.....26

**U**

U-BOLT,1/4-20 SL2 PIPE CRADLE.....39  
 UP STOP.....25-26

**V**

VIDEO,NTSC,SLA,CABLING PROCDR.....30

**W**

WASHER, NYLON, .51X.75X.125...21, 23, 25-26  
 WASHER,DOUBLE D.....35  
 WASHER,FLAT,.5 HARDENED.....23, 26  
 WASHER,FLAT,.5X .125,HARDENED\*.....29-30  
 WASHER,FLAT,NYLON.515X.88X.093.....21  
 WASHER,FLAT,USS,1/2",Y.....19, 21, 23, 25-26  
 WASHER,FLAT,USS,3/8",Y.....15, 17, 19, 21  
 WASHER,FLAT,USS,5/16",Y.....35  
 WASHER,LOCK,0.5".....19  
 WASHER,PUSH ON .75 SHAFT.....21  
 WASHER,SHIM,.5 X .875 X .063.....23, 25-26, 29-30  
 WASHER,SHIM,.765X1.312 X.093\*\*.....21, 41  
 WASHER,SHIM,1.50 X .890 X .09.....19  
 WASHER-FLAT, 1/2" (80056).....35  
 WASHER-STAR,INTERN,5/8"(32525).....33  
 WEDGE, MACHINED.....17  
 WELD,STABILIZER LEG SL2 BLUE.....19  
 WELDMENT,ARM ADJ. FORK-"BLUE".....37  
 WELDMENT,ARM STRADDLE LEFT.....17  
 WELDMENT,ARM STRADDLE RIGHT.....17  
 WELDMENT,CLEVIS STD. BOOM.....39  
 WELDMENT,FLATFORK SOCKET.....37  
 WELDMENT,LEG,SL15.....19  
 WELDMENT,LEG,SL20/25.....19  
 WELDMENT,LEG,SL5/10.....19  
 WHEEL SPACER MNT WELD LH,SL.....41  
 WHEEL SPACER MOUNT WELD,RH,SL.....41  
 WHEEL SPACER WELDMENT,SL"GRAY".....41  
 WHEEL,POLY,6X2, 3/4\*\*.....21  
 WHEEL,POLYOLEFIN,3.5X1.25,7/8.....19  
 WHEEL,ROLLER,NYLATRON,1.75.....21, 23, 25-26  
 WHEEL,SOLID RUBBER,10X.75X2.75.....41  
 WHEEL,TRANSPORT SL 10X.75X2.75.....41  
 WINCH BRACKET, DRUM BOLT LOCK.....33  
 WINCH GEAR COVERS, K-1500.....33  
 WINCH HANDLE 6" STD.....33  
 WINCH HANDLE 8" STD.....33  
 WINCH MOUNT W/ SYMBOL DECAL.....21  
 WINCH MOUNT W/DECAL (SLA).....21  
 WINCH PINION PLATE, K-1550.....33  
 WINCH SPACER, 2 SPEED SLC,GRAY.....21  
 WINCH SPACER,1 SPEED SLA, BLUE.....21  
 WINCH W/DECAL,2 SPEED\*\*\*.....35  
 WINCH,W/DECAL 1SPEED SL/ST.....33

***This Page Intentionally Left Blank***

## Fitting Cross References

Genie PN	Parker PN	Description	Genie PN	Parker PN	Description
12342	6-4 F5OX-S	CONNECTOR,STRAIGHT THREAD TO FLARE TUBE	42794	1 CR-S	ELBOW,90°,MALE PIPE
13757	4 R6X-S	RUN TEE,SWIVEL NUT,ORFS	42795	BV-0839	BALL VALVE
19685	12-10 C5OX-S	ELBOW,90°,STRAIGHT THREAD TO FLARE TUBE	42796	BV-0838	BALL VALVE
22664	12-10 C5OX	ELBOW,90°,STRAIGHT THREAD TO FLARE TUBE	42874	6-8 CLO-S	ELBOW,90°,MALE PIPE TO ORFS
27431	8-12 F5OX-S	CONNECTOR,STRAIGHT THREAD TO FLARE TUBE	42912	13943-6-4	HOSE END,90° FEMALE SWIVEL,JIC
28678	AS-B-33	SLEEVE,NYLON,1.81" ID	42920	BV-0840	BALL VALVE,90°
39871	6 WETX-WLN-S	UNION,90° BULKHEAD W/NUT,FLARE TUBE	42932	AS-B-17	SLEEVE,NYLON,1.22" ID
39872	4 R5OX-S	RUN TEE,STRAIGHT THREAD	42936	10243-2-4	HOSE END,FEMALE PIPE
39873	6 C5OX-S	ELBOW,90°,STRAIGHT THREAD TO FLARE TUBE	42953	1/2 DD-S	ELBOW,90°,FEMALE PIPE
39874	8-6 C5OX-S	ELBOW,90°,STRAIGHT THREAD TO FLARE TUBE	42956	6 WELO-WLNL-S	UNION,90° BULKHEAD W/NUT,ORFS
39875	4-6 C5OX-S	ELBOW,90°,STRAIGHT THREAD TO FLARE TUBE	45349	8 V5OX-S	ELBOW,45°,STRAIGHT THREAD TO FLARE TUBE
39876	6-8 C5OX-S	ELBOW,90°,STRAIGHT THREAD TO FLARE TUBE	45351	4 V5OX-S	ELBOW,45°,STRAIGHT THREAD TO FLARE TUBE
39877	4 F5OX-S	CONNECTOR,STRAIGHT THREAD TO FLARE TUBE	47223	10343-6-6	HOSE END,MALE,JIC
39878	6 F5OX-S	CONNECTOR,STRAIGHT THREAD TO FLARE TUBE	47419	PS690503-6-6	SWIVEL,90°,STRAIGHT THREAD TO 37° FLARE
39879	4-8 F5OX-S	CONNECTOR,STRAIGHT THREAD TO FLARE TUBE	48750	421-4	HOSE,1/4 INCH ID
39880	6-10 F5OX-S	CONNECTOR,STRAIGHT THREAD TO FLARE TUBE	48751	481TC-4	HOSE,1/4 INCH ID
39881	4-6 F5OX-S	CONNECTOR,STRAIGHT THREAD TO FLARE TUBE	48752	482TC-4	HOSE,1/4 INCH ID
39882	4-HP5ON-S	PLUG,STRAIGHT THREAD	48753	451TC-6	HOSE,3/8 INCH ID
39883	8-8 FTX-S	CONNECTOR,MALE PIPE TO FLARE TUBE	48754	482TC-6	HOSE,3/8 INCH ID
39885	269HB 12-12	ELBOW,90°,BEADED HOSE BARB TO MALE PIPE	48755	381-6	HOSE,3/8 INCH ID
39886	431-6	HOSE,3/8 INCH ID	48756	451TC-8	HOSE,1/2 INCH ID
39887	540N-2	HOSE,1/8 INCH ID	48757	482TC-8	HOSE,1/2 INCH ID
39888	801-8	HOSE,1/2 INCH ID	48758	381-8	HOSE,1/2 INCH ID
39889	801-12	HOSE,3/4 INCH ID	48759	381-10	HOSE,5/8 INCH ID
39890	10643-6-6	HOSE END,FEMALE SWIVEL,JIC	48760	451TC-10	HOSE,5/8 INCH ID
39891	13943-6-6	HOSE END,90° FEMALE SWIVEL,JIC	48761	482TC-12	HOSE,3/4 INCH ID
39892	13743-6-6	HOSE END,45° FEMALE SWIVEL,JIC	48762	451TC-12	HOSE,3/4 INCH ID
39894	30682-8-8	HOSE END,FEMALE SWIVEL,JIC	48763	772-12	HOSE,3/4 INCH ID
39895	30682-10-12	HOSE END,FEMALE SWIVEL,JIC	48764	881-16	HOSE,1 INCH ID
42286	8-8 CTX-S	ELBOW,90°,MALE PIPE TO FLARE TUBE	48765	772-16	HOSE,1 INCH ID
42756	8-12 CLO-S	ELBOW,90,MALE PIPE TO ORFS	48766	AS-B-15	SLEEVE,NYLON,1.06" ID
42757	8-12 FLO-S	CONNECTOR,MALE PIPE TO ORFS	48767	AS-B-22	SLEEVE,NYLON,1.42" ID
42758	4 JLO-S	UNION TEE,ORFS	48770	881-8	HOSE,1/2 INCH ID
42759	4-4 FLO-S	CONNECTOR,MALE PIPE TO ORFS			
42760	6-8 FLO-S	CONNECTOR,MALE PIPE TO ORFS			
42761	1J143-6-4	HOSE END,90° FEMALE SWIVEL,SEAL LOK			
42762	1J743-6-4	HOSE END,45° FEMALE SWIVEL,SEAL LOK			
42768	1JO43-4-4	HOSE END,MALE,SEAL LOK			
42776	601-8	HOSE,1/2 INCH ID			
42777	1J743-16-16	HOSE END,45° FEMALE SWIVEL,SEAL LOK			
42786	16 CLO-S	ELBOW,90°,MALE PIPE TO ORFS			
42787	16 R6LO-S	RUN TEE,SWIVEL NUT,ORFS			
42788	16-8 TRLO-BL-S	REDUCER,TUBE END TO SWIVEL,ORFS			
42789	6-6 CLO-S	ELBOW,90°,MALE PIPE TO ORFS			
42790	8-10 V5OLO-S	ELBOW,45°,STRAIGHT THREAD TO ORFS			
42791	3/4 CD-S	ELBOW,90°,MALE TO FEMALE PIPE			
42792	3/4 X 1/2 PTR-S	REDUCER,MALE TO FEMALE PIPE			
42793	1/2 CR-S	ELBOW,90°,MALE PIPE			

## Fitting Cross References (Continued)

Genie PN	Parker PN	Description	Genie PN	Parker PN	Description
48771	881-10	HOSE,5/8 INCH ID	48847	13943-12-12	HOSE END,90° FEMALE SWIVEL,JIC
48772	381-4	HOSE,1/4 INCH ID	48848	10543-12-12	HOSE END,MALE,STRAIGHT THREAD
48773	AS-B-13	SLEEVE,NYLON,.86" ID	48849	1JC71-12-12	HOSE END,FEMALE SWIVEL,SEAL LOK
48800	1JC43-4-4	HOSE END,FEMALE SWIVEL,SEAL LOK	48850	1JS71-12-12	HOSE END,FEMALE SWIVEL,SEAL LOK
48801	1J743-4-4	HOSE END,45° FEMALE SWIVEL,SEAL LOK	48851	1J171-12-12	HOSE END,90° FEMALE SWIVEL,SEAL LOK
48802	1J943-4-4	HOSE END,90° FEMALE SWIVEL,SEAL LOK	48852	1J771-12-12	HOSE END,45° FEMALE SWIVEL,SEAL LOK
48804	1JM43-4-4	HOSE END,MALE,SEAL LOK, NO O-RING	48853	1J971-12-12	HOSE END,90° FEMALE SWIVEL,SEAL LOK
48805	10643-4-4	HOSE END,FEMALE SWIVEL,JIC	48854	1JC43-16-16	HOSE END,FEMALE SWIVEL,SEAL LOK
48806	13943-4-4	HOSE END,90° FEMALE SWIVEL,JIC	48855	1J943-16-16	HOSE END,90° FEMALE SWIVEL,SEAL LOK
48807	1JS43-4-4	HOSE END,FEMALE SWIVEL,SEAL LOK	48856	1J171-16-16	HOSE END,90° FEMALE SWIVEL,SEAL LOK
48808	3JC82-8-8	HOSE END,FEMALE SWIVEL,SEAL LOK	48857	1J971-16-16	HOSE END,90° FEMALE SWIVEL,SEAL LOK
48809	3JC82-12-12	HOSE END,FEMALE SWIVEL,SEAL LOK	48859	1JS43-8-4	HOSE END,FEMALE SWIVEL,SEAL LOK
48810	1JC43-6-4	HOSE END,FEMALE SWIVEL,SEAL LOK	48867	PD36BTL	DIAGNOSTIC NIPPLE,SEAL-LOK SWIVEL
48811	1J943-6-4	HOSE END,90° FEMALE SWIVEL,SEAL LOK	48873	6 PNLO-S	PLUG,TUBE END,ORFS
48812	1JC43-6-6	HOSE END,FEMALE SWIVEL,SEAL LOK	48874	6 PNTX-S	PLUG,FLARE TUBE
48813	1J143-6-6	HOSE END,90° FEMALE SWIVEL,SEAL LOK	48875	6 R6LO-S	RUN TEE,SWIVEL NUT,ORFS
48814	1J543-6-6	HOSE END,90° FEMALE SWIVEL,SEAL LOK	48877	4 F5OLO-SW/.025	CONNECTOR,STRAIGHT THREAD TO ORFS, W/.025 ORI
48815	1J743-6-6	HOSE END,45° FEMALE SWIVEL,SEAL LOK	48878	16-12 C5OLO-S	ELBOW,90°,STRAIGHT THREAD TO ORFS
48816	1J943-6-6	HOSE END,90° FEMALE SWIVEL,SEAL LOK	48879	8 C6LO-S	ELBOW,90°,SWIVEL NUT ORFS
48817	1JS43-6-8	HOSE END,FEMALE SWIVEL,SEAL LOK	48880	PD6-285	CAP,DIAGNOSTIC NIPPLE
48818	1J943-8-4	HOSE END,90° FEMALE SWIVEL,SEAL LOK	48881	6 HLO-S	UNION,ORFS
48819	1JC43-8-6	HOSE END,FEMALE SWIVEL,SEAL LOK	48883	8 P5ON-S	PLUG,STRAIGHT THREAD
48820	1J743-8-6	HOSE END,45° FEMALE SWIVEL,SEAL LOK	48884	8M18F87OMLO-S	CONNECTOR,METRIC,STRAIGHT THREAD TO ORFS
48821	1J943-8-6	HOSE END,90° FEMALE SWIVEL,SEAL LOK	48885	4 WGTX-WLN-S	CONNECTOR,BULKHEAD,FEMALE PIPE TO FLARE TUBE
48822	1JC43-8-8	HOSE END,FEMALE SWIVEL,SEAL LOK	48886	4 F5OLO-SW/2MM	CONNECTOR,MACHINED STRAIGHT THREAD TO ORFS
48823	1JS43-8-8	HOSE END,FEMALE SWIVEL,SEAL LOK	48887	4 CTX-S	ELBOW,90°,MALE PIPE TO FLARE TUBE
48824	1J143-8-8	HOSE END,90° FEMALE SWIVEL,SEAL LOK	48888	10-12 V5OLO-S	ELBOW,45°,STRAIGHT THREAD TO ORFS
48825	1J543-8-8	HOSE END,90° FEMALE SWIVEL,SEAL LOK	48890	4 S5OLO-S	BRANCH TEE,STRAIGHT THREAD TO ORFS
48826	1J743-8-8	HOSE END,45° FEMALE SWIVEL,SEAL LOK	48891	4 S6LO-S	BRANCH TEE,SWIVEL NUT TO ORFS
48827	1J943-8-8	HOSE END,90° FEMALE SWIVEL,SEAL LOK			
48828	1JC43-10-8	HOSE END,FEMALE SWIVEL,SEAL LOK			
48829	1JS43-10-8	HOSE END,FEMALE SWIVEL,SEAL LOK			
48830	1J743-10-8	HOSE END,45° FEMALE SWIVEL,SEAL LOK			
48831	1J943-10-8	HOSE END,90° FEMALE SWIVEL,SEAL LOK			
48833	1JC43-10-10	HOSE END,FEMALE SWIVEL,SEAL LOK			
48834	1J943-10-10	HOSE END,90° FEMALE SWIVEL,SEAL LOK			
48835	1JS43-10-12	HOSE END,FEMALE SWIVEL,SEAL LOK			
48836	1JC43-12-8	HOSE END,FEMALE SWIVEL,SEAL LOK			
48837	1JS43-12-8	HOSE END,FEMALE SWIVEL,SEAL LOK			
48838	1J743-12-8	HOSE END,45° FEMALE SWIVEL,SEAL LOK			
48839	1J943-12-8	HOSE END,90° FEMALE SWIVEL,SEAL LOK			
48840	1J943-12-10	HOSE END,90° FEMALE SWIVEL,SEAL LOK			
48841	1JC43-12-12	HOSE END,FEMALE SWIVEL,SEAL LOK			
48842	1JO43-12-12	HOSE END,MALE,SEAL LOK			
48843	1J143-12-12	HOSE END,90° FEMALE SWIVEL,SEAL LOK			
48844	1J543-12-12	HOSE END,90° FEMALE SWIVEL,SEAL LOK			
48845	1J743-12-12	HOSE END,45° FEMALE SWIVEL,SEAL LOK			
48846	1J943-12-12	HOSE END,90° FEMALE SWIVEL,SEAL LOK			

## Fitting Cross References (Continued)

Genie PN	Parker PN	Description	Genie PN	Parker PN	Description
48892	6 C6LO-S	ELBOW,90°,SWIVEL NUT ORFS	48938	8 R6LO-S	RUN TEE,SWIVEL NUT,ORFS
48893	6 F5OHAO-S	UNION,STRAIGHT THREAD	48939	8 S6LO-S	BRANCH TEE,SWIVEL NUT TO ORFS
48894	8 WLO-WLNL-S	UNION,BULKHEAD,ORFS	48940	8 WJLO-WLNL-S	RUN TEE, BULKHEAD,ORFS
48895	DT-370-MSMO-5	VALVE,CHECK	48941	8-4 TRLO-S	REDUCER,TUBE END TO SWIVEL,ORFS
48896	6 JLO-S	UNION,TEE,ORFS	48942	8-6 C5OLO-S	ELBOW,90°,STRAIGHT THREAD TO ORFS
48897	DT-750-MSMS-5	VALVE,CHECK	48943	8-6 F5OLO-S	CONNECTOR,STRAIGHT THREAD TO ORFS
48898	DT-750-MOMS-5	VALVE,CHECK	48944	8-8 FLO-S	CONNECTOR,MALE PIPE TO ORFS
48899	DT-620-MOMS-5	VALVE,CHECK	48945	8 FTX-S	CONNECTOR,MALE PIPE TO FLARE TUBE
48900	4-6 F5OLO-SW/.035	CONNECTOR,STRAIGHT THREAD TO ORFS, W/.035 ORI	48946	8-10 F5OLO-S	CONNECTOR,STRAIGHT THREAD TO ORFS
48902	16-1 AOE4G-S	ELBOW,90° LONG,FEMALE PIPE TO STRAIGHT THREAD	48947	8-12 C5OLO-S	ELBOW,90°,STRAIGHT THREAD TO ORFS
48903	1 FF-S	NIPPLE,PIPE	48948	8-12 F5OLO-S	CONNECTOR,STRAIGHT THREAD TO ORFS
48904	4 C5OLO-S	ELBOW,90°,STRAIGHT THREAD TO ORFS	48949	8-16 F5OLO-S	CONNECTOR,STRAIGHT THREAD TO ORFS
48905	4 F5OLO-S	CONNECTOR,STRAIGHT THREAD TO ORFS	48950	10 C5OLO-S	ELBOW,90°,STRAIGHT THREAD TO ORFS
48906	4 R5OLO-S	RUN TEE,STRAIGHT THREAD	48951	10 CC5OLO-S	ELBOW,90° LONG,STRAIGHT THREAD TO ORFS
48907	4 V5OLO-S	ELBOW,45°,STRAIGHT THREAD TO ORFS	48952	10 F5OLO-S	CONNECTOR,STRAIGHT THREAD TO ORFS
48908	4 R6LO-S	RUN TEE,SWIVEL NUT,ORFS	48953	10 R5OLO-S	RUN TEE,STRAIGHT THREAD
48909	4 WJLO-WLNL-S	RUN TEE, BULKHEAD,ORFS	48954	10 S5OLO-S	BRANCH TEE,STRAIGHT THREAD TO ORFS
48910	4 GTX-S W/.030	CONNECTOR,FEMALE PIPE TO FLARE TUBE	48955	10 R6LO-S	RUN TEE,SWIVEL NUT,ORFS
48911	4-6 C5OLO-S	ELBOW,90°,STRAIGHT THREAD TO ORFS	48956	10-4 TRLO-BL-S	REDUCER,TUBE END TO SWIVEL,ORFS
48912	4-6 F5OLO-S	CONNECTOR,STRAIGHT THREAD TO ORFS	48957	10-6 TRLO-BL-S	REDUCER,TUBE END TO SWIVEL,ORFS
48913	4-6 F5OLO-SW/.030	CONNECTOR,STRAIGHT THREAD TO ORFS, W/.030 ORI	48958	10-12 F5OLO-S	CONNECTOR,STRAIGHT THREAD TO ORFS
48914	4-8 F5OLO-S	CONNECTOR,STRAIGHT THREAD TO ORFS	48959	12 C5OLO-S	ELBOW,90°,STRAIGHT THREAD TO ORFS
48915	6 C5OLO-S	ELBOW,90°,STRAIGHT THREAD TO ORFS	48960	12 F5OLO-S	CONNECTOR,STRAIGHT THREAD TO ORFS
48916	6 F5OLO-S	CONNECTOR,STRAIGHT THREAD TO ORFS	48961	12 R5OLO-S	RUN TEE,STRAIGHT THREAD
48917	6 FF5OLO-S	CONNECTOR,LONG,STRAIGHT THREAD TO ORFS	48962	12 S5OLO-S	BRANCH TEE,STRAIGHT THREAD TO ORFS
48918	6 R5OLO-S	RUN TEE,STRAIGHT THREAD	48963	12 V5OLO-S	ELBOW,45°,STRAIGHT THREAD TO ORFS
48919	6 S5OLO-S	BRANCH TEE,STRAIGHT THREAD TO ORFS	48964	12 R6LO-S	RUN TEE,SWIVEL NUT,ORFS
48920	6 V5OLO-S	ELBOW,45°,STRAIGHT THREAD TO ORFS	48965	12 CLO-S	ELBOW,90°,MALE PIPE TO ORFS
48921	6 FLO-S	CONNECTOR,MALE PIPE TO ORFS	48966	12 FLO-S	CONNECTOR,MALE PIPE TO ORFS
48922	6-6 FLO-S	CONNECTOR,MALE PIPE TO ORFS	48967	12 JLO-S	UNION TEE,ORFS
48923	6 P5ON-S	PLUG,STRAIGHT THREAD	48968	12 WLO-WLNL-S	UNION,BULKHEAD,ORFS
48925	6 WELO-S	UNION,90° BULKHEAD,ORFS	48969	12 WJLO-WLNL-S	RUN TEE, BULKHEAD,ORFS
48926	6-4 C5OLO-S	ELBOW,90°,STRAIGHT THREAD TO ORFS	48970	12 WELO-WLNL-S	UNION,90° BULKHEAD W/NUT,ORFS
48927	6-4 F5OLO-S	CONNECTOR,STRAIGHT THREAD TO ORFS			
48928	6-4 V5OLO-S	ELBOW,45°,STRAIGHT THREAD TO ORFS			
48929	6-8 C5OLO-S	ELBOW,90°,STRAIGHT THREAD TO ORFS			
48930	6-8 F5OLO-S	CONNECTOR,STRAIGHT THREAD TO ORFS			
48931	6-10 F5OLO-S	CONNECTOR,STRAIGHT THREAD TO ORFS			
48932	8 C5OLO-S	ELBOW,90°,STRAIGHT THREAD TO ORFS			
48933	8 F5OLO-S	CONNECTOR,STRAIGHT THREAD TO ORFS			
48934	8 FF5OLO-S	CONNECTOR,LONG,STRAIGHT THREAD TO ORFS			
48935	8 R5OLO-S	RUN TEE,STRAIGHT THREAD			
48936	8 S5OLO-S	BRANCH TEE,STRAIGHT THREAD TO ORFS			
48937	8 V5OLO-S	ELBOW,45°,STRAIGHT THREAD TO ORFS			



## Fitting Cross References (Continued)

Genie PN	Parker PN	Description	Genie PN	Parker PN	Description
48971	12 G5G5JG5-S	TEE,FEMALE STRAIGHT THREAD	49612	PKT02586	O-RING KIT (ORFS FITTINGS)
48972	12 XHL6-S	ADAPTER, 37° MALE TO SWIVEL ORFS	49613	PKT06276	PLUG AND CAP KIT-SERVICE,ORFS
48973	12-1/2 F5OG-S	ADAPTER,FEMALE PIPE TO STRAIGHT THREAD	49728	10143-12-12	HOSE END, MALE PIPE
48974	12-10 C5OLO-S	ELBOW,90°,STRAIGHT THREAD TO ORFS	49729	16-1 F5OG-S	ADAPTER,FEMALE PIPE TO STRAIGHT THREAD
48975	12-10 F5OLO-S	CONNECTOR,STRAIGHT THREAD TO ORFS	49814	12-8 FLO-S	CONNECTOR,MALE PIPE TO ORFS
48976	12-16 C5OLO-S	ELBOW,90°,STRAIGHT THREAD TO ORFS	49829	DT-500-MOMF-5	VALVE,CHECK
48977	12-16 F5OLO-S	CONNECTOR,STRAIGHT THREAD TO ORFS	49831	881-12	HOSE,3/4 INCH ID
48978	12-16 V5OLO-S	ELBOW,45°,STRAIGHT THREAD TO ORFS	49834	16 JLO-S	UNION TEE,ORFS
48980	12-16 FLO-S	CONNECTOR,MALE PIPE TO ORFS	49838	12-8 TRLO-BL-S	REDUCER,TUBE END TO SWIVEL,ORFS
48983	16 C5OLO-S	ELBOW,90°,STRAIGHT THREAD TO ORFS	49840	8 JLO-S	UNION TEE,ORFS
48984	16 F5OLO-S	CONNECTOR,STRAIGHT THREAD TO ORFS	49844	10-8 TRLO-BL-S	REDUCER,TUBE END TO SWIVEL,ORFS
48985	16 V5OLO-S	ELBOW,45°,STRAIGHT THREAD TO ORFS	49854	8 P5ON-S	PLUG,STRAIGHT THREAD
48986	16 FLO-S	CONNECTOR,MALE PIPE TO ORFS	49855	1JC43-16-12	HOSE END,FEMALE SWIVEL,SEAL LOK
48988	16 CD45-S	ELBOW,45°,MALE TO FEMALE PIPE	49859	4 P5ON-S	PLUG,STRAIGHT THREAD
48989	12 CD45-S	ELBOW,45°,MALE TO FEMALE PIPE	49861	4 FF5OLO-S	CONNECTOR,LONG,STRAIGHT THREAD TO ORFS
48990	8 CD45-S	ELBOW,45°,MALE TO FEMALE PIPE	49867	12-3/4 F5OG-S	ADAPTER,FEMALE PIPE TO STRAIGHT THREAD
48991	16-12 FLO-S	CONNECTOR,MALE PIPE TO ORFS	51152	6 R6X-S	RUN TEE,SWIVEL NUT,ORFS
48992	16-12 V5OLO-S	ELBOW,45°,STRAIGHT THREAD TO ORFS	51153	6-4 TRTX-S	REDUCER,TUBE END TO SWIVEL,ORFS
48993	XV501-12	BALL VALVE	51154	4-4 GTX	CONNECTOR,FEMALE PIPE TO FLARE TUBE
48994	XV501-16	BALL VALVE	51264	881-12	HOSE,3/4 INCH ID
48995	XV510P-12	BALL VALVE	51265	8 JLO-S	UNION TEE,ORFS
48996	XV510P-16	BALL VALVE	51508	6 BTX-S	NUT,FLARE TUBE
48997	PD341	DIAGNOSTIC NIPPLE, STRAIGHT THREAD	51580	12-8 TRLO-BL-S	TUBE END REDUCER,ORFS
48998	PD 361	DIAGNOSTIC NIPPLE, STRAIGHT THREAD	51628	6 R6X-S	RUN TEE,SWIVEL NUT,ORFS
48999	DT-500-MOMS-5	VALVE,CHECK	51735	3/8 HHP	PLUG,PIPE THREAD
49201	10 V5OLO-S	ELBOW,45°,STRAIGHT THREAD TO ORFS	51803	1J943-6-8	HOSE END,90° FEMALE SWIVEL,SEAL LOK
49202	1JC43-12-10	HOSE END,FEMALE SWIVEL,SEAL LOK	53023	125HBL-5-4	FITTING,HOSE BARB TO MALE PIPE
49203	10-8 V5OLO-S	ELBOW,45°,STRAIGHT THREAD TO ORFS	53497	PKT02585	O-RING KIT
49205	6 F5OHAO-S	UNION,STRAIGHT THREAD	53499	1JC71-16-16	HOSE END,FEMALE SWIVEL,SEAL LOK
49207	PD34BTL	DIAGNOSTIC NIPPLE,SEAL-LOK SWIVEL	53500	3-904	O-RING,STRAIGHT THREAD,-4
49209	8M18F870MX-S	CONNECTOR,METRIC,STRAIGHT THREAD TO FLARE TUBE	53501	3-906	O-RING,STRAIGHT THREAD,-6
49212	8 WGTX-WLN-S	CONNECTOR,BULKHEAD,FEMALE PIPE TO FLARE TUBE	53502	3-908	O-RING,STRAIGHT THREAD,-8
49213	30682-8-8	HOSE END,FEMALE SWIVEL,JIC	53503	3-910	O-RING,STRAIGHT THREAD,-10
49216	831-8	HOSE,1/2 INCH ID			
49217	33982-8-8	HOSE END,90° FEMALE SWIVEL,JIC			
49219	PS-B-35	SLEEVE,NYLON,2.19" ID			
49418	4-6 V5OLO-S	ELBOW,45°,STRAIGHT THREAD TO ORFS			
49511	DT370-MOMS-5	VALVE,CHECK			
49512	1 DD-S	ELBOW,90°,FEMALE PIPE			
49513	1 FF-S	NIPPLE,PIPE			
49514	10 HP5ON-S	PLUG,STRAIGHT THREAD			
49515	12-16 CLO-S	ELBOW,90°,MALE PIPE TO ORFS			
49517	6 HP5ON-S	PLUG,STRAIGHT THREAD			
49519	16-12 F5OLO-S	CONNECTOR,STRAIGHT THREAD TO ORFS			
49520	4 VTX-S	ELBOW,45°,MALE PIPE TO FLARE TUBE			
49530	16 C6LO-S	ELBOW,90°,SWIVEL NUT ORFS			

## Fitting Cross References (Continued)

Genie PN	Parker PN	Description	Genie PN	Parker PN	Description
53535	3-912	O-RING,STRAIGHT THREAD,-12	61083	24 F5OLO-S	CONNECTOR,STRAIGHT THREAD TO ORFS
53536	4-PNLO-S	PLUG,TUBE END,ORFS	61086	20 R5OLO-S	RUN TEE,STRAIGHT THREAD
53537	6 PNLO-S	PLUG,TUBE END,ORFS	61090	24-20 F5OLO-S	CONNECTOR,STRAIGHT THREAD TO ORFS
53538	8 PNLO-S	PLUG,TUBE END,ORFS	61091	1J943 24-24	HOSE END,90° FEMALE SWIVEL,SEAL LOK
53539	10 PNLO-S	PLUG,TUBE END,ORFS	61093	1J978-12-12	HOSE END,90° FEMALE SWIVEL,JIC
53540	12 PNLO-S	PLUG,TUBE END,ORFS	61095	1JS43-20-16	HOSE END,FEMALE SWIVEL,SEAL LOK
53946	129HB-5-4	FITTING,90° HOSE BARB TO MALE PIPE	61100	811-24	HOSE,11/2 INCH ID
53951	8-1/4F5OG-S	ADAPTER,FEMALE PIPE TO STRAIGHT THREAD	61130	1JS43-24-24	HOSE END,FEMALE SWIVEL,SEAL LOK
53980	6 S6LO-S	BRANCH TEE,SWIVEL NUT TO ORFS	61131	1JS78 12-12	HOSE END,FEMALE SWIVEL,SEAL LOK
54132	4 C6LO-S	ELBOW,90°,SWIVEL NUT ORFS	61132	1J778-12-12	HOSE END,45° FEMALE SWIVEL,JIC
54135	11343-16-16	HOSE END,MALE SWIVEL,PIPE	61152	139HB-6-4	ELBOW,45°,BARB TO MALE PIPE
54283	8-10 C5OLO-S	ELBOW,90°,STRAIGHT THREAD TO ORFS	61251	BV-0750	BALL VALVE
54428	8M18C870MLO-S	ELBOW, 90° METRIC, STRAIGHT THREAD TO ORFS	61259	4 CC5OLO-S	ELBOW,90° LONG,STRAIGHT THREAD TO ORFS
54803	FS-F-16-10	SLEEVE,FIRE,-.96" ID	61260	20-12 TRLO-BL	REDUCER,TUBE END TO SWIVEL,ORFS
54954	10143-2-4	HOSE END, MALE PIPE	61262	12 C6LO-S	ELBOW,90°,SWIVEL NUT ORFS
55190	3/8 HP-S	PLUG,PIPE THREAD	61263	20 F5OHAO-S	UNION,STRAIGHT THREAD
55448	8 HLO-S	UNION,ORFS	61264	6-10 C5OLO-S	ELBOW,90°,STRAIGHT THREAD TO ORFS
55839	6 F65OX-S	CONNECTOR,STRAIGHT THREAD TO 37° SWIVEL	61265	6 WNLO-WLNL-S	UNION,BULKHEAD 45°,ORFS
55968	10 C5OX-S	ELBOW,90°,STRAIGHT THREAD TO FLARE TUBE	61268	4 WNLO-WLNL-S	UNION,BULKHEAD 45°,ORFS
56003	6 CC5OLO-S	ELBOW,90° LONG,STRAIGHT THREAD TO ORFS	61269	4 WLO-WLNL-S	UNION,BULKHEAD,ORFS
56166	BV-0837	BALL VALVE,90°	61272	12 AOEL6	ELBOW,90°,STRAIGHT THREAD TO ORFS SWIVEL
56188	10143-8-6	HOSE END, MALE PIPE	61316	482TC-16	HOSE,1 INCH ID
56233	2-011	O-RING,ORFS,-4	61321	6 JLO-S	UNION TEE,ORFS
56234	2-012	O-RING,ORFS,-6	61327	782-12	HOSE,3/4 INCH ID
56235	2-014	O-RING,ORFS,-8	61328	881-24	HOSE,11/2 INCH ID
56236	2-016	O-RING,ORFS,-10	61336	11943-20-24	HOSE END,90° FLANGE HEAD
56237	2-018	O-RING,ORFS,-12	61345	12 WJLO-WLNL-S	RUN TEE, BULKHEAD,ORFS
56238	2-021	O-RING,ORFS,-16	61346	8 WNLO-WLNL-S 4	UNION,BULKHEAD 45°,ORFS
56352	6 WLNL-S	LOCKNUT,BULKHEAD	61569	33782-8-8	HOSE END,45° FEMALE SWIVEL,JIC
56353	3J782-12-12	HOSE END,45° FEMALE SWIVEL,SEAL LOK	61610	12 FF5OLO-S	CONNECTOR,LONG,STRAIGHT THREAD TO ORFS
56354	3J982-12-12	HOSE END,90° FEMALE SWIVEL,SEAL LOK	61742	1/8 X 1.5 FFF	NIPPLE,PIPE
56604	10-8 F5OLO-S	CONNECTOR,STRAIGHT THREAD TO ORFS	63426	8 PNTX-S	PLUG,FLARE TUBE
56639	3JC82-10-10	HOSE END,FEMALE SWIVEL,SEAL LOK			
56640	3J982-10-10	HOSE END,90° FEMALE SWIVEL,SEAL LOK			
56655	3JC82-8-10	HOSE END,FEMALE SWIVEL,SEAL LOK			
56676	10-8 C5OLO-S	ELBOW,90°,STRAIGHT THREAD TO ORFS			
56776	471TC-6	HOSE,3/8 INCH ID			
56777	471TC-8	HOSE,1/2 INCH ID			
56789	811-16	HOSE,1 INCH ID			
57884	3/8 FF	NIPPLE,PIPE			
59335	6 FNL-S	CAP, TUBE END			
59342	4 FNL-S	CAP, TUBE END			
59371	8 HP5ON-S	PLUG,STRAIGHT THREAD			
60653	BV-0751	BALL VALVE			
60806	125HB-3-4	FITTING,HOSE BARB TO MALE PIPE			
61064	5-1/4 F5OG-S	ADAPTER,FEMALE PIPE TO STRAIGHT THREAD			
61079	4 WELO-WLNL-S	UNION,90° BULKHEAD W/NUT,ORFS			
61080	6 WLO-WLNL-S	UNION,BULKHEAD,ORFS			

## Fitting Cross References (Continued)

Genie PN	Parker PN	Description	Genie PN	Parker PN	Description
64271	4 WLO-WLNL-S	UNION,BULKHEAD,ORFS	75631	801-6	HOSE,3/8 INCH ID
64272	6 WLO-WLNL-S	UNION,BULKHEAD,ORFS	75654	20 F5OLO-S	CONNECTOR,STRAIGHT THREAD TO ORFS
65776	8 F65OL-S	CONNECTOR,STRAIGHT THREAD TO ORFS SWIVEL	75655	1J943-20-20	HOSE END,90° FEMALE SWIVEL,SEAL LOK
65880	6001012	O-RING KIT	75656	881-20	HOSE,1-1/4 INCH ID
66154	6 WTX-WLNS	UNION,BULKHEAD,FLARE TUBE	75971	8 F5OHAO-S	UNION,STRAIGHT THREAD
66155	6 WETX-S	UNION,BULKHEAD 90°,FLARE TUBE	77307	1JB43-8-8	HOSE END,BULKHEAD,SEAL LOK
66156	6 WLN-S	BULKHEAD LOCKNUT	77309	8 WLNL-S	BULKHEAD LOCKNUT
66389	6-8 F5OX-S	CONNECTOR,STRAIGHT THREAD TO FLARE TUBE	77379	8M18C87OMX-S	ELBOW,90° METRIC,STRAIGHT THREAD TO FLARE TUBE
66392	6 R5OX-S	RUN TEE,STRAIGHT THREAD	77703	3J982-8-8	HOSE END,90° FEMALE SWIVEL,SEAL LOK
66396	811-12	HOSE,3/4 INCH ID	77711	801-10	HOSE,5/8 INCH ID
66829	H3174PP	CLAMP,TUBE	77758	12 WNLO-WLNL-S	UNION,BULKHEAD 45°,ORFS
67217	4 KLO-S	UNION,CROSS,ORFS	78091	6 C6X-S	ELBOW,90°,SWIVEL NUT TO FLARE TUBE
67339	10-6 F5OX-S	CONNECTOR,STRAIGHT THREAD TO FLARE TUBE	78684	30582-8-8B	HOSE END,PUSH LOK,MALE
67357	13943-8-6	HOSE END,90° FEMALE SWIVEL,JIC	78852	549-2	HOSE,1/8 INCH ID
67358	10 HP5ON-S	PLUG,STRAIGHT THREAD	78855	10657-4-2	HOSE END,FEMALE SWIVEL,JIC
67371	12 S6LO-S	BRANCH TEE,SWIVEL NUT TO ORFS	79138	PS-B-37	SLEEVE,NYLON,2.38" ID
67498	4 FNL-S	CAP, TUBE END	79476	1JS43-6-8	HOSE END,FEMALE SWIVEL,SEAL LOK
67906	DC-370-F0F0-5	VALVE,CHECK	79847	12-3/4 A0EG-S	ELBOW,90°,STRAIGHT THREAD TO FEMALE PIPE
69316	8 FLO-S	CONNECTOR,MALE PIPE TO ORFS	80044	8 CLO-S	ELBOW,90°,MALE PIPE TO ORFS
69333	H3174PP	CLAMP,HYDRAULIC HOSE	80502	8 F5OX-S	CONNECTOR,STRAIGHT THREAD TO FLARE TUBE
69503	4 F65OX-S	CONNECTOR,STRAIGHT THREAD TO 37° SWIVEL	80503	8 C5OX-S	ELBOW,90°,STRAIGHT THREAD TO FLARE TUBE
69775	8 FNL-S	CAP, TUBE END	81010	AS-B-27	SLEEVE,NYLON,1.63" ID
71038	1/4X1/4F3HG-S	ADAPTER,CONVERSION	83052	821-6	HOSE,3/8 INCH ID
71196	12-8 F5OLO-S	CONNECTOR,STRAIGHT THREAD TO ORFS	83053	821-8	HOSE,1/2 INCH ID
71383	1/4 CD45-S	ELBOW,45°,MALE TO FEMALE PIPE	83054	821-12	HOSE,3/4 INCH ID
72270	12FNL-S	CAP, TUBE END	83055	30682-6-6	HOSE END,FEMALE SWIVEL,JIC
73436	60C-4	SLEEVE,COMPRESSION	83056	30682-12-12	HOSE END,FEMALE SWIVEL,JIC
73437	61C-4	NUT,COMPRESSION	83057	33782-6-6	HOSE END,45° FEMALE SWIVEL,JIC
73438	33482-4-4B	HOSE END,PUSH LOK,MALE	83058	33982-6-6	HOSE END,90° FEMALE SWIVEL,JIC
73767	1CD-S	ELBOW,90°,MALE TO FEMALE PIPE	83060	33982-12-12	HOSE END,90° FEMALE SWIVEL,JIC
73768	20-16-F5OG5-S	ADAPTER,FEMALE PIPE TO STRAIGHT THREAD	83063	13743-4-4	HOSE END,45° FEMALE SWIVEL,JIC
73769	16-20 F5OLO-S	CONNECTOR,STRAIGHT THREAD TO ORFS			
74660	6-8 F42EDMLO-S	CONNECTOR,MALE BSPP TO ORFS			
74661	8-8 F42EDMLO-S	CONNECTOR,MALE BSPP TO ORFS			
75007	4 FLO-S	CONNECTOR,MALE PIPE TO ORFS			
75008	1/8 HP-S	PLUG,PIPE THREAD			
75014	1/2 HP-S	PLUG,PIPE THREAD			
75042	8 WELO-WLNL-S	UNION,90° BULKHEAD W/NUT,ORFS			
75043	3/4 FF-S	NIPPLE,PIPE			
75254	24 F5OHAO-S	UNION,STRAIGHT THREAD			
75255	12 F5OHAO-S	UNION,STRAIGHT THREAD			
75256	XV506P-24	BALL VALVE			
75574	4 WLNL-S	BULKHEAD LOCKNUT			
75612	8 WJLO-WLNL-S	RUN TEE, BULKHEAD,ORFS			
75613	12-8 F5OG5-S	ADAPTER,FEMALE PIPE TO STRAIGHT THREAD			
75614	8 CC5OLO-S	ELBOW,90° LONG,STRAIGHT THREAD TO ORFS			
75628	1JB43-4-4	HOSE END,BULKHEAD,SEAL LOK			

## Fitting Cross References (Continued)

Genie PN	Parker PN	Description	Genie PN	Parker PN	Description
83064	13743-8-8	HOSE END,45° FEMALE SWIVEL,JIC	89449	6 WJLO-WLNL-S	RUN TEE, BULKHEAD,ORFS
83065	13743-12-12	HOSE END,45° FEMALE SWIVEL,JIC	89489	4 WJMLO-S	BRANCH TEE,BULKHEAD,ORFS
83066	13943-8-8	HOSE END,90° FEMALE SWIVEL,JIC	89551	1JB43-6-6	HOSE END,BULKHEAD,SEAL LOK
83067	14143-6-6	HOSE END,90° FEMALE SWIVEL,JIC	89552	1JB43-8-8	HOSE END,BULKHEAD,SEAL LOK
83068	14143-8-8	HOSE END,90° FEMALE SWIVEL,JIC	89593	20 C5OLO-S	ELBOW,90°,STRAIGHT THREAD TO ORFS
83069	14143-12-12	HOSE END,90° FEMALE SWIVEL,JIC	94161	8-8 CLO-S	ELBOW,90°,MALE PIPE TO ORFS
83070	772-8	HOSE,1/2 INCH ID	94358	351TC-12	HOSE,3/4 INCH ID
83071	10671-8-8	HOSE END,FEMALE SWIVEL,JIC	94418	20 FLO-S	CONNECTOR,MALE PIPE TO ORFS
83072	10671-12-12	HOSE END,FEMALE SWIVEL,JIC	96358	12 TX-S	SLEEVE,FLARE TUBE
83073	13771-8-8	HOSE END,45° FEMALE SWIVEL,JIC	96359	12 BTX-S	NUT,FLARE TUBE
83074	13771-12-12	HOSE END,45° FEMALE SWIVEL,JIC	96397	8 F5OX-S	CONNECTOR,STRAIGHT THREAD TO FLARE TUBE
83075	13971-8-8	HOSE END,90° FEMALE SWIVEL,JIC	96398	12-8 F5OX-S	CONNECTOR,STRAIGHT THREAD TO FLARE TUBE
83076	13971-12-12	HOSE END,90° FEMALE SWIVEL,JIC	96402	10343-6-6	HOSE END,MALE,JIC
83077	14171-8-8	HOSE END,90° FEMALE SWIVEL,JIC	96407	30382-6-6B	HOSE END,MALE,JIC
83078	14171-12-12	HOSE END,90° FEMALE SWIVEL,JIC			
83080	13943-16-16	HOSE END,90° FEMALE SWIVEL,JIC			
83103	10671-16-12	HOSE END,FEMALE SWIVEL,JIC			
83104	10671-10-12	HOSE END,FEMALE SWIVEL,JIC			
83112	1JC71-8-8	HOSE END,FEMALE SWIVEL,SEAL LOK			
83113	1JS71-16-12	HOSE END,FEMALE SWIVEL,SEAL LOK			
83114	1JS71-10-12	HOSE END,FEMALE SWIVEL,SEAL LOK			
83115	1J971-8-8	HOSE END,90° FEMALE SWIVEL,SEAL LOK			
83116	1J171-8-8	HOSE END,90° FEMALE SWIVEL,SEAL LOK			
83117	1J771-8-8	HOSE END,45° FEMALE SWIVEL,SEAL LOK			
83127	1J543-6-8	HOSE END,90° FEMALE SWIVEL,JIC			
83128	1JC43-6-8	HOSE END,FEMALE SWIVEL,SEAL LOK			
87033	12-6 TRLO-S	REDUCER,TUBE END TO SWIVEL,ORFS			
87034	3J782-8-8	HOSE END,45° FEMALE SWIVEL,SEAL LOK			
87172	12 HP5ON-S	PLUG,STRAIGHT THREAD			
87185	8 WNLO-WLNL-S	UNION,BULKHEAD 45°,ORFS			
87246	4 C6X-S	ELBOW,90°,SWIVEL NUT TO FLARE TUBE			
87679	6 LHP-S	FLANGE SEAL FITTING, MALE			
87681	6PLS N0702	BONDED SEAL			
88100	SR88100	ADAPTER,OIL DRAIN,GM 3.0L			
88311	1JS43-20-20	HOSE END,FEMALE SWIVEL,SEAL LOK			
88353	20 V5OLO-S	ELBOW,45°,STRAIGHT THREAD TO ORFS			
88474	10081-20	Crimp Shell, 1.25"			
88475	1988-20-24	HOSE END,90° FLANGE HEAD			
88476	JS88-24-24	HOSE END,FEMALE SWIVEL,SEAL LOK			
88477	1JC88-20-20	HOSE END,FEMALE SWIVEL,SEAL LOK			
88478	811-20	HOSE,11/4 INCH ID			
88936	20-16 F5OLO-S	CONNECTOR,STRAIGHT THREAD TO ORFS			
88937	20-16 FLO-S	CONNECTOR,MALE PIPE TO ORFS			
88938	1JC88-16-16	HOSE END,FEMALE SWIVEL,SEAL LOK			
88939	1J988-16-16	HOSE END,90° FEMALE SWIVEL,ORFS			
88940	811-16	HOSE,1 INCH ID			
88944	1J988-20-20	HOSE END,90° FEMALE SWIVEL,ORFS			
89403	16 VLO-S	ELBOW,45°,MALE PIPE TO ORFS			

California Proposition 65

## Warning

The exhaust from this product contains chemicals known to the State of California to cause cancer, birth defects or other reproductive harm.

### Genie North America

**Phone** 425.881.1800  
**Toll Free** USA and Canada  
800.536.1800  
**Fax** 425.883.3475

### Genie Australia Pty Ltd.

**Phone** +61 7 3375 1660  
**Fax** +61 7 3375 1002

### Genie China

**Phone** +86 21 53852570  
**Fax** +86 21 53852569

### Genie Malaysia

**Phone** +65 98 480 775  
**Fax** +65 67 533 544

### Genie Japan

**Phone** +81 3 3453 6082  
**Fax** +81 3 3453 6083

### Genie Korea

**Phone** +82 25 587 267  
**Fax** +82 25 583 910

### Genie Brasil

**Phone** +55 11 41 665 755  
**Fax** +55 11 41 665 754

### Genie Holland

**Phone** +31 183 581 102  
**Fax** +31 183 581 566

### Genie Scandinavia

**Phone** +46 31 575100  
**Fax** +46 31 579020

### Genie France

**Phone** +33 (0)2 37 26 09 99  
**Fax** +33 (0)2 37 26 09 98

### Genie Iberica

**Phone** +34 93 579 5042  
**Fax** +34 93 579 5059

### Genie Germany

**Phone** +49 (0)4202 88520  
**Fax** +49 (0)4202 8852-20

### Genie U.K.

**Phone** +44 (0)1476 584333  
**Fax** +44 (0)1476 584334

### Genie Mexico City

**Phone** +52 55 5666 5242  
**Fax** +52 55 5666 3241

Distributed By:

**Parts Manual**  
**Superlift Advantage**

*from SLA04-25259*

Part No.  
115408

Rev B3

